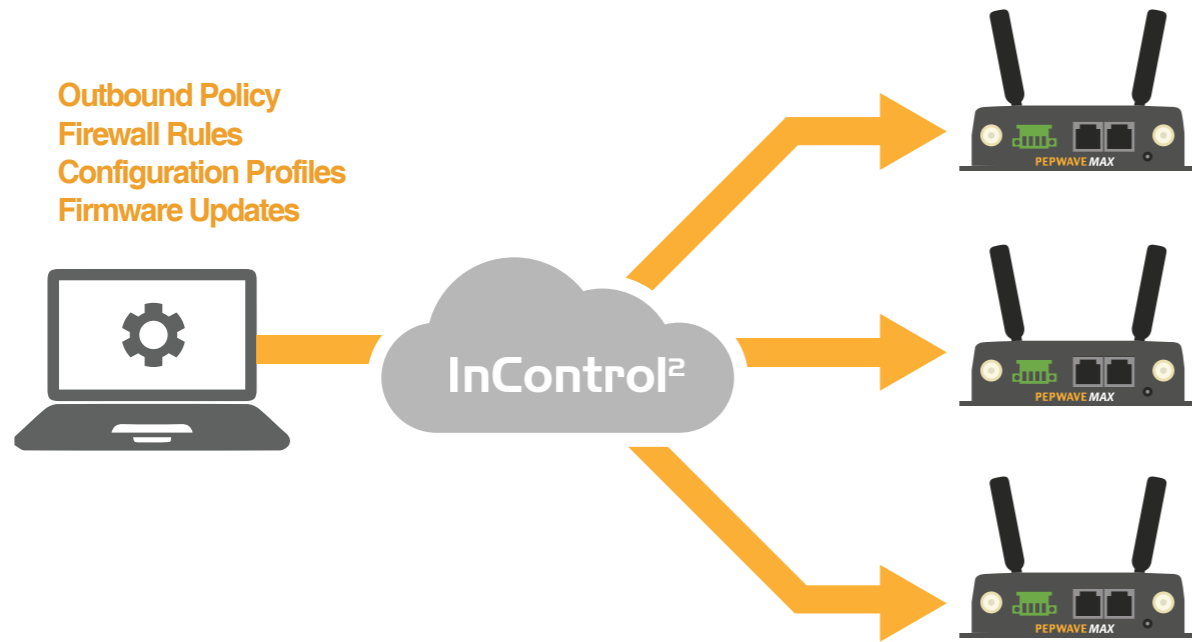


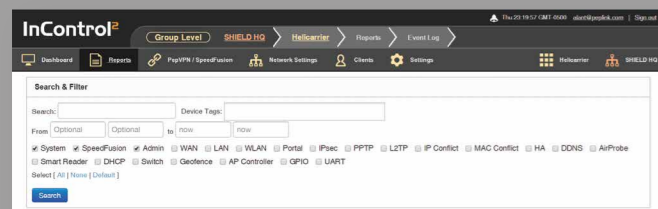
## InControl Central Management: Make Security Scalable



One of the major costs of securing a network comes from hiring team members dedicated to monitoring the network and going onsite to perform fixes. The bigger your network, the more people you need to hire. InControl provides a more scalable solution, multiplying the effectiveness of your network administrators. This is accomplished through a combination of features. Informative dashboards give administrators an eagle's eye view of their network, giving them the ability to spot problems in an instant. InControl also features comprehensive yet easily searchable logs detailing network events and user activity.

While dashboards and event logs enable administrators to see, bulk configuration and centralized policies enables administrators to act. From a single pane of glass, administrators will be able to centralize firewall rules, outbound policy, configuration profiles, and firmware update policy. This makes management scalable: as the number of devices in your network increases, the workload in managing and securing them remains the same. If administrators need to perform in-depth troubleshooting, they can use InControl to remotely access any router's Web Admin. This enables them to perform almost any configuration changes as if they were onsite.

## Comprehensive Event Records

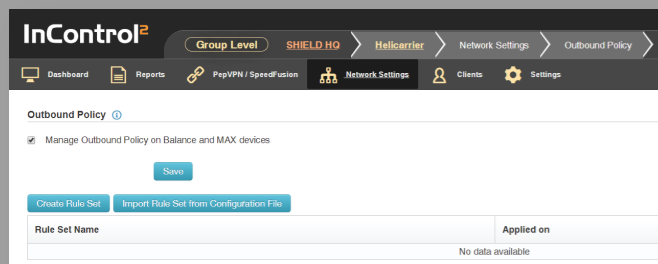


Filter events by event type, device tags, and timeframe.

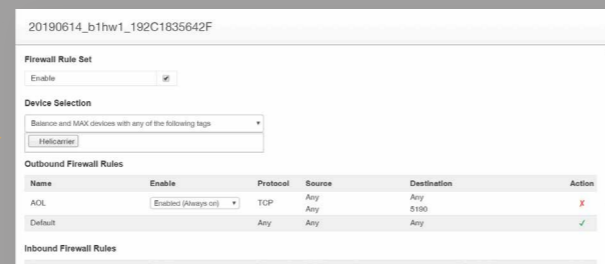
Time	Device	SSID	Client	Type	Details
Fri, Jun 14 11:53:28	Warehouse			System	Changes applied
Fri, Jun 14 11:52:00	Warehouse			Admin	admin login successful
Fri, Jun 14 11:21:49	Core GW			Admin	genetec login successful
Fri, Jun 14 09:56:31	Warehouse			System	Time synchronization successful
Fri, Jun 14 09:51:25	Warehouse			System	Time synchronization fail
Fri, Jun 14 08:56:49	Dpht 039			System	MediFw! schedule 2 ended (1)
Fri, Jun 14 08:05:39	Dpht 039			System	MediFw! schedule 2 started
Fri, Jun 14 08:00:01	Dpht 039			System	MediFw! schedule 2 started
Fri, Jun 14 08:00:01	Dpht 039			System	MediFw! schedule 2 started
Fri, Jun 14 07:20:52	Warehouse			System	Time synchronization successful
Fri, Jun 14 07:15:46	Warehouse			System	Time synchronization fail

Detailed log, downloadable as CSV.

## Centralize Outbound Policy and Firewall Rules

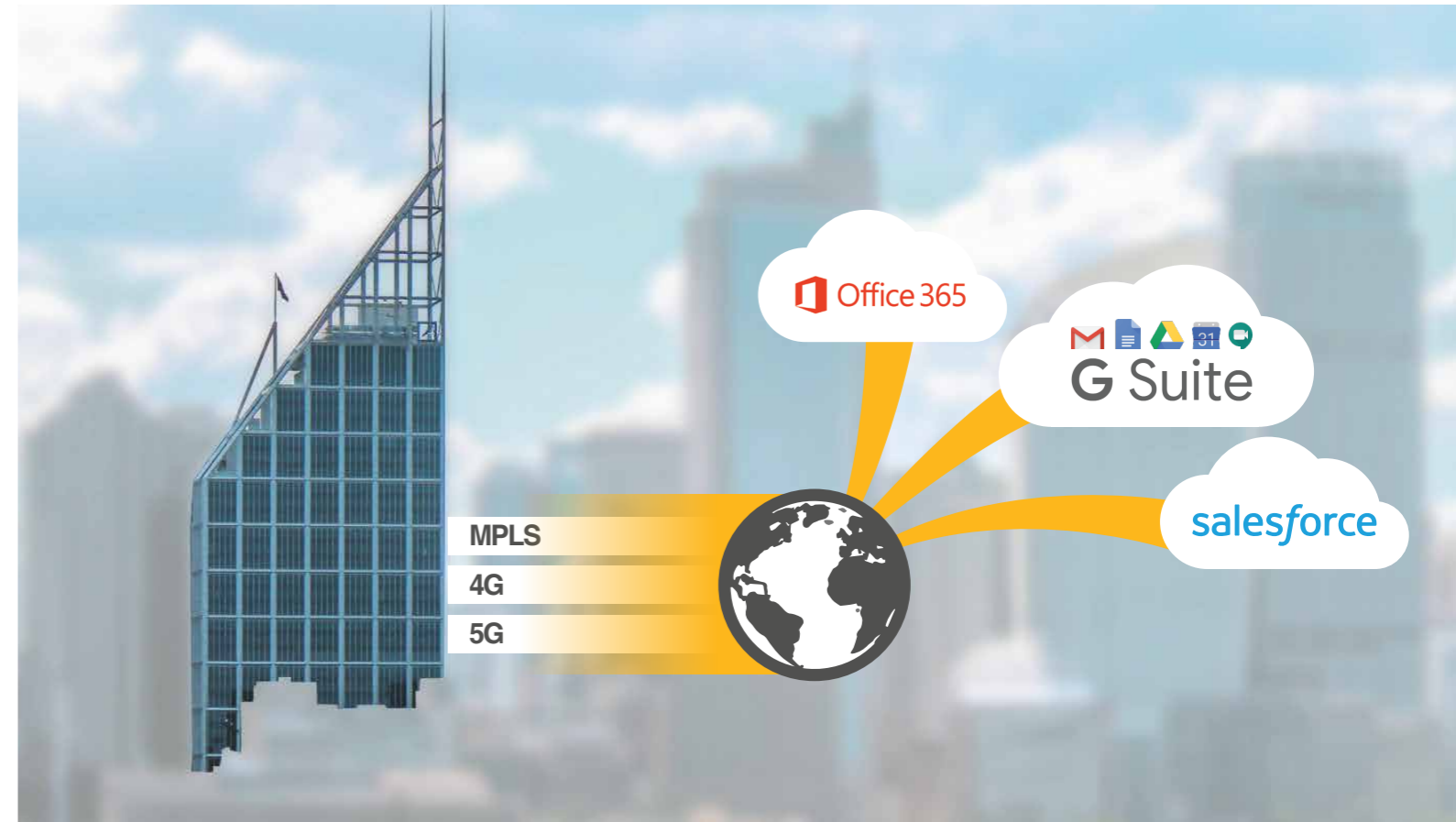


Import Ruleset from Device Config File



Apply Rules to Devices via Tags

## SpeedFusion SD-WAN Securely Extend MPLS over Multiple 4G/5G



Securing your organization is a critical task that requires substantial investments of time and money. Peplink offers a solution that can simultaneously increase the security and flexibility of your network, while reducing cost and complexity.

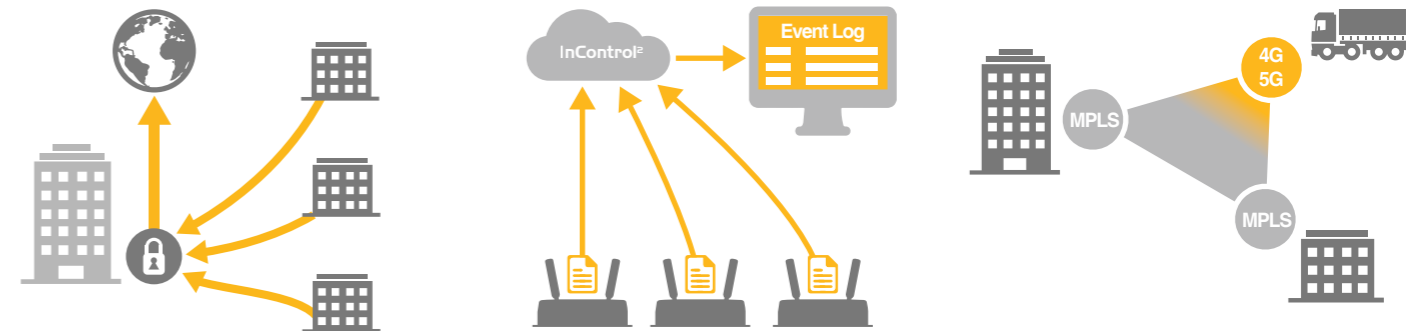
## Expanding Your Secure Network is...

**Expensive:** Licensing fees grow with the number of endpoints. Need to hire and train dedicated internal IT resources.

**Complicated:** Difficulty in managing and unifying multiple firewalls. Network management not scalable.

**Constrained:** When team members need to go offsite, they can only access HQ resources using mobile phones.

## Peplink Solutions:



### Centralize Traffic to Your Firewall:

Form VPN important traffic to Headquarters where you can apply any UTM in the market. Break apart sessions and send packets across multiple WAN connections for added security.

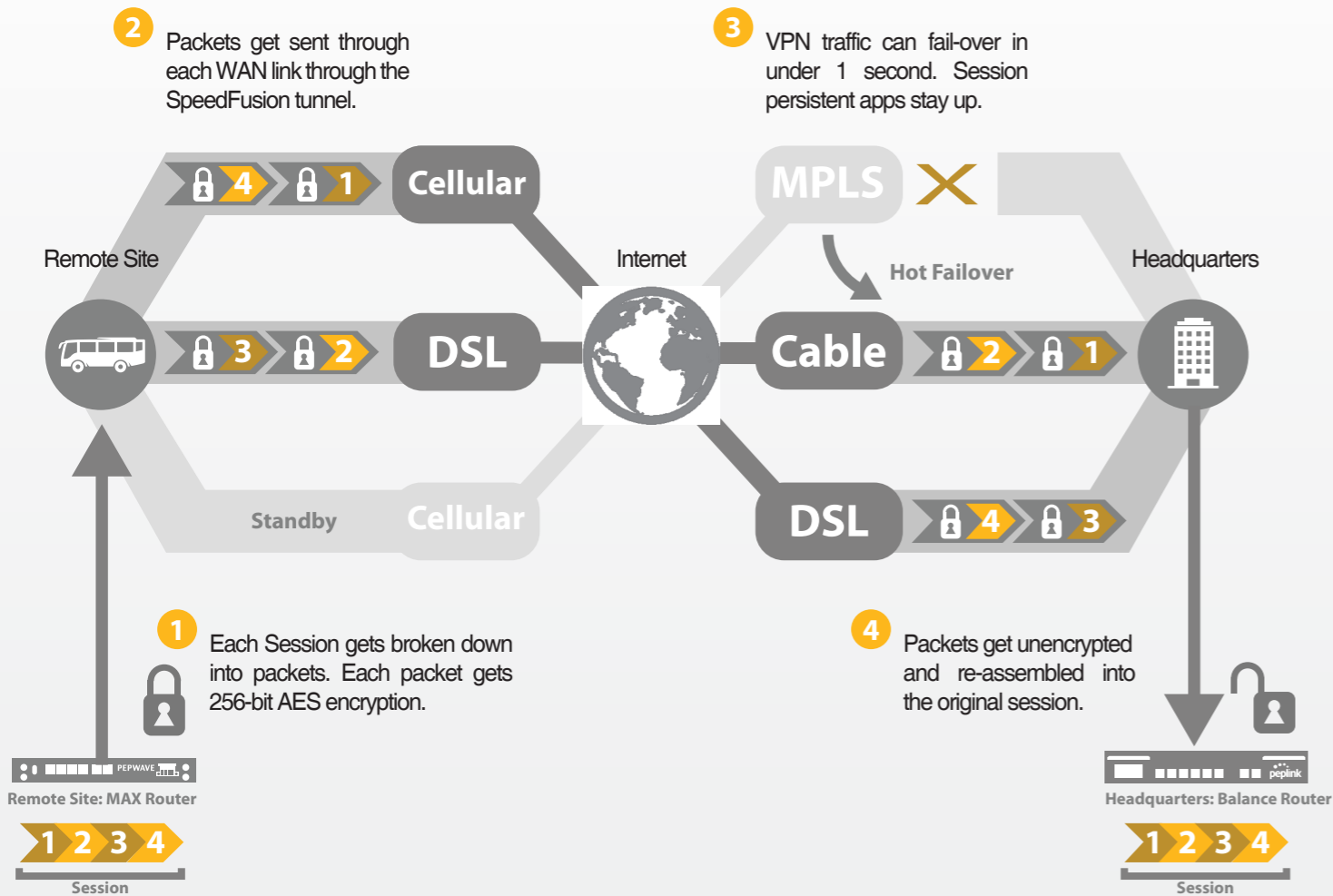
### Complete Visibility With InControl:

On a single pane of glass, centralize outbound policy and firewall rules. Push configurations to groups of devices with a single button. Perform in-depth diagnosis remotely using the Remote Web Admin.

### Extend MPLS Over Multiple 4G/5G:

Use SpeedFusion SD-WAN to combine multiple 4G and 5G links into a single, unbreakable VPN connection. This enables team members to access HQ resources without using their cellphones.

## SpeedFusion SD-WAN: Packet-Level Security



SpeedFusion is a patented technology that take each session and break it off into individual packets. The packets are then encrypted with 256-bit AES encryption and distributed to different WAN connections depending on outbound policy. The encrypted packets will then travel securely through the Internet until they reach the WAN links of the other SpeedFusion endpoint. There, the packets are decrypted, and reassembled into a complete session. This method of traffic distribution offers several key advantages:

### SpeedFusion Advantages:

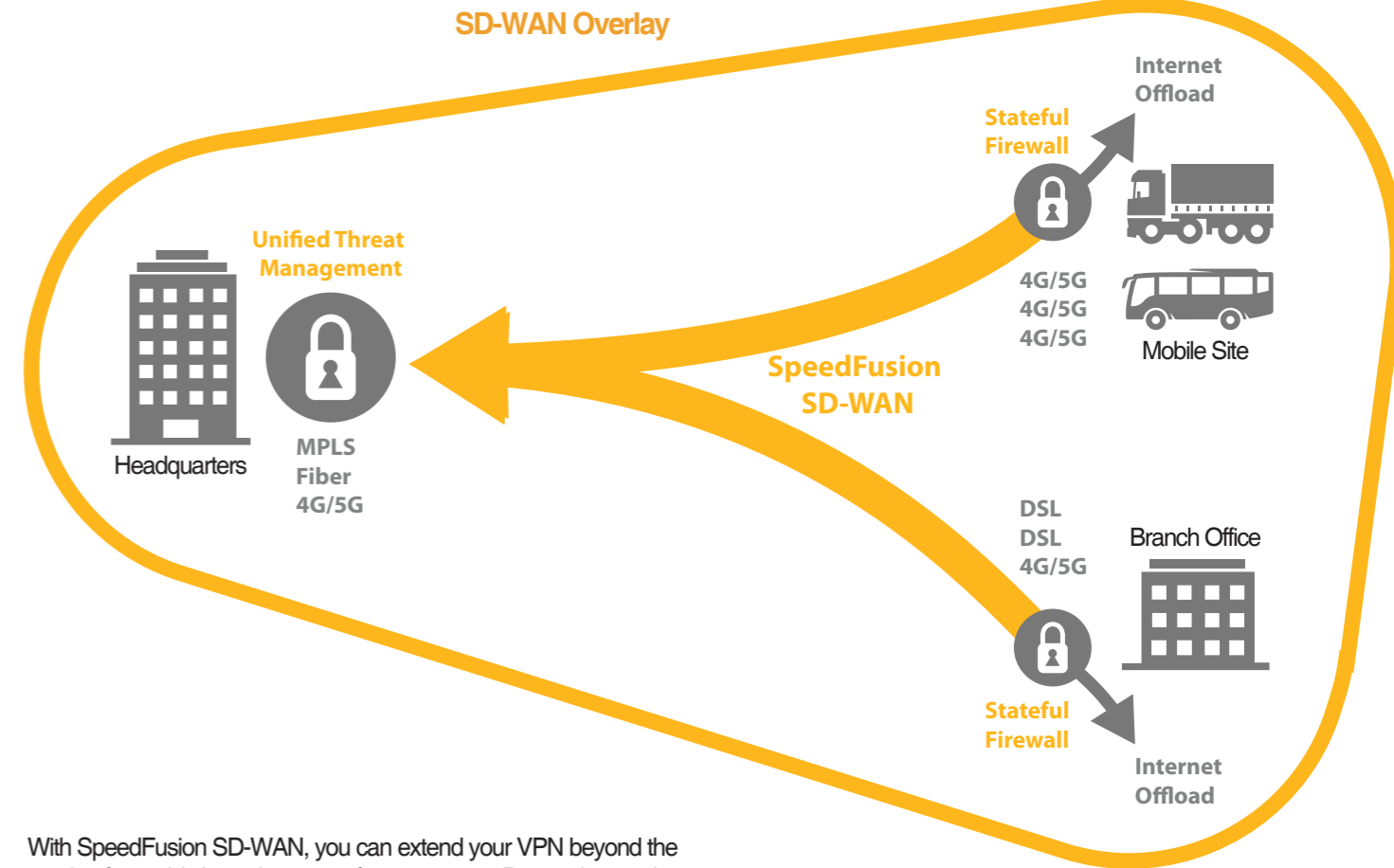


**Packet-Level Security:** Each session is broken down into packets and each packet is sent through a different WAN link. This means even if an intruder can access and decrypt traffic from a single WAN link, they would only get pieces of the session, impossible to reassemble or interpret.

**256-bit AES Encryption:** Established by the U.S. National Institute of Standards and Technology, AES is adopted by governments worldwide. 256-bit AES is the strongest variety. With  $1.15 \times 10^{78}$  possible combinations, it would take the fastest super-computer millions of years to crack.

**Affordable Link Scalability:** SpeedFusion SD-WAN combines the bandwidth of multiple WAN links into a single VPN connection. This means you can increase the bandwidth of MPLS connections by adding multiple WAN link, saving significant money compared to paying for a faster MPLS.

## Securely Extend MPLS over Multiple 4G/5G



With SpeedFusion SD-WAN, you can extend your VPN beyond the reach of wired links without sacrificing security. By combining the bandwidth of multiple WAN connections, you can achieve the same security, reliability, and speed of a fixed line, without an actual fixed line.

A SpeedFusion SD-WAN network has multiple security safeguards in place. Because network traffic is distributed between the different WAN links, each link only has a limited number of packets, making it impossible for potential intruders to reassemble and interpret the partial information. Moreover, SpeedFusion endpoints can also serve as a stateful firewalls or send traffic to headquarters where it is treated by a Unified Threat management (UTM) system. Finally, SpeedFusion traffic is encrypted using AES 256, the same standard used by many governments

### Deployment Scenarios



**Enable Connectivity to Mobile and Temporary Sites:** When only fixed lines are available, setting up new sites takes months. With SpeedFusion SD-WAN, you can use 4G and 5G connections to connect the new site. Instead of months, set up time becomes a matter of minutes. This technology is also useful for connecting mobile applications such as vehicles and ships. With multi-cellular SD-WAN, mobile deployments can connect to HQ quickly and reliably.

**Supplement Fixed Sites With Cellular Connectivity:** When the office connection goes down, all work stops. If the site is customer-facing with PoS, then cashflows stop as well. SpeedFusion SD-WAN can prevent this scenario by adding 4G and 5G connections into the mix. When the fixed connection goes down, the SpeedFusion-enabled router can switch connections fast enough for team members to not even notice that a connection went down.