



BR1 Mini M2M

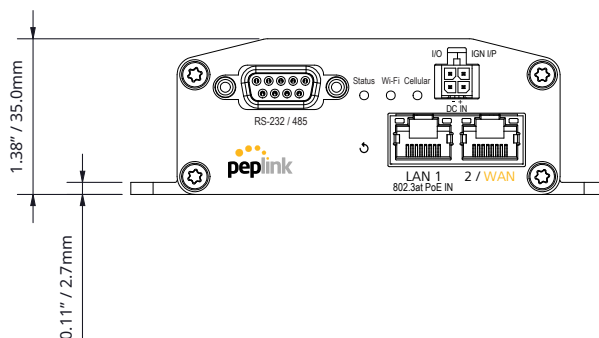
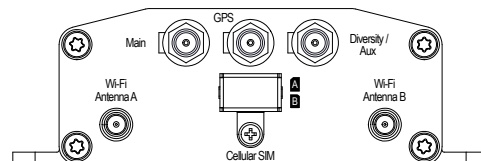
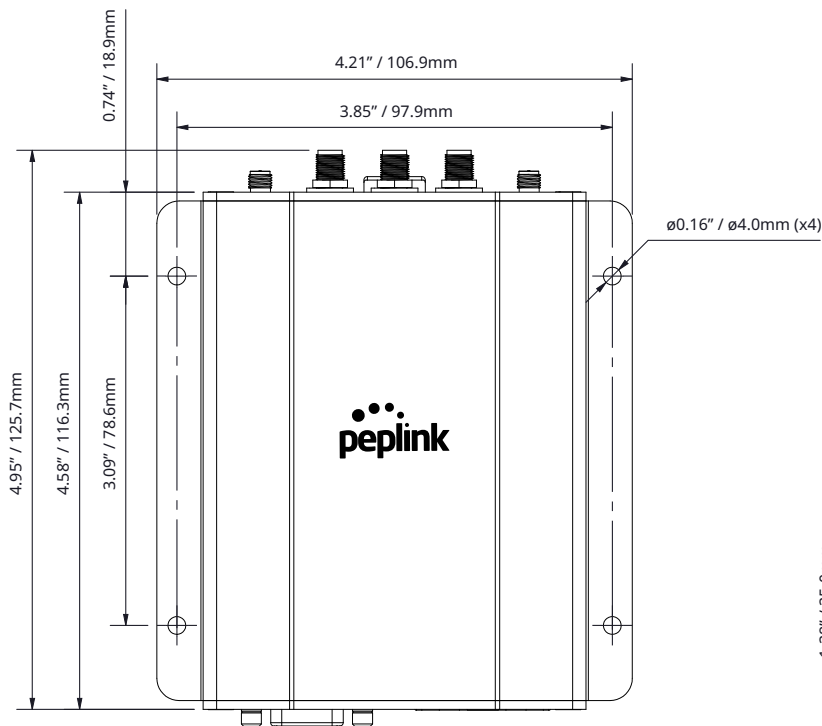
Hardware Reference Guide

BR1 Mini M2M

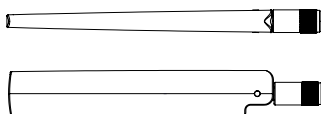


Packing List Information

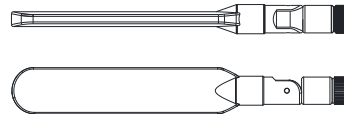
Router



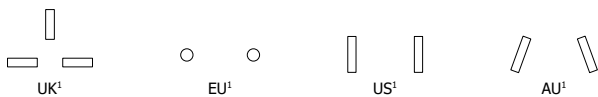
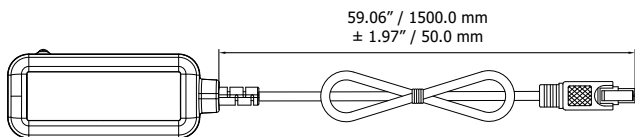
Accessories



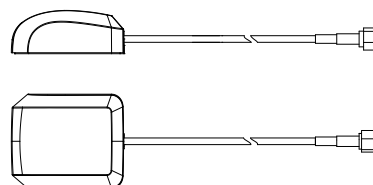
LTE/5G Antennas
(2 pcs, SMA Male)



Dual-Band Wi-Fi Antennas
(2 pcs, RP SMA Male)



12V 2A 4-Pin Power Supply
(1 pc)

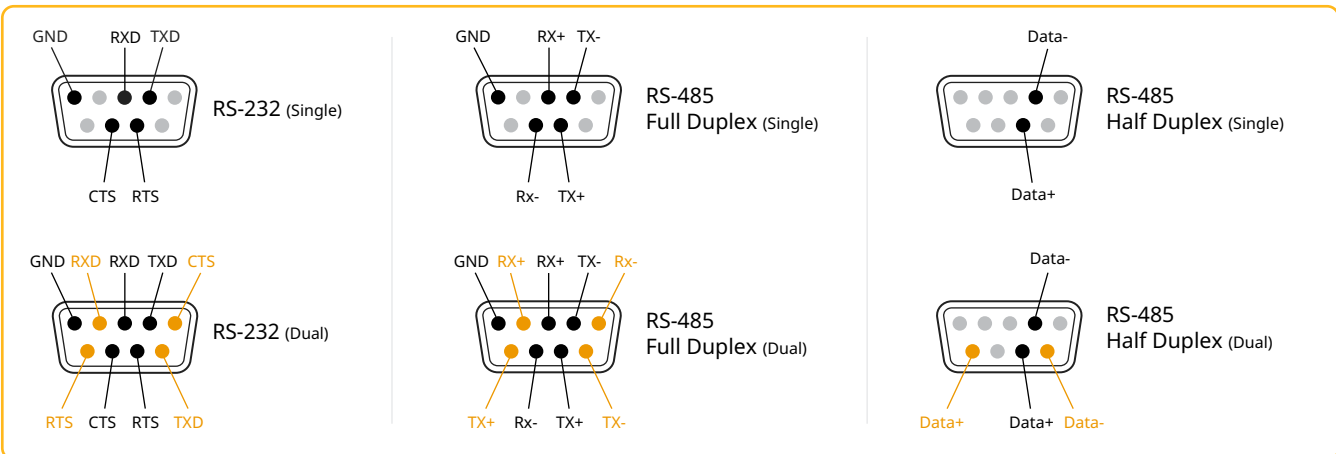
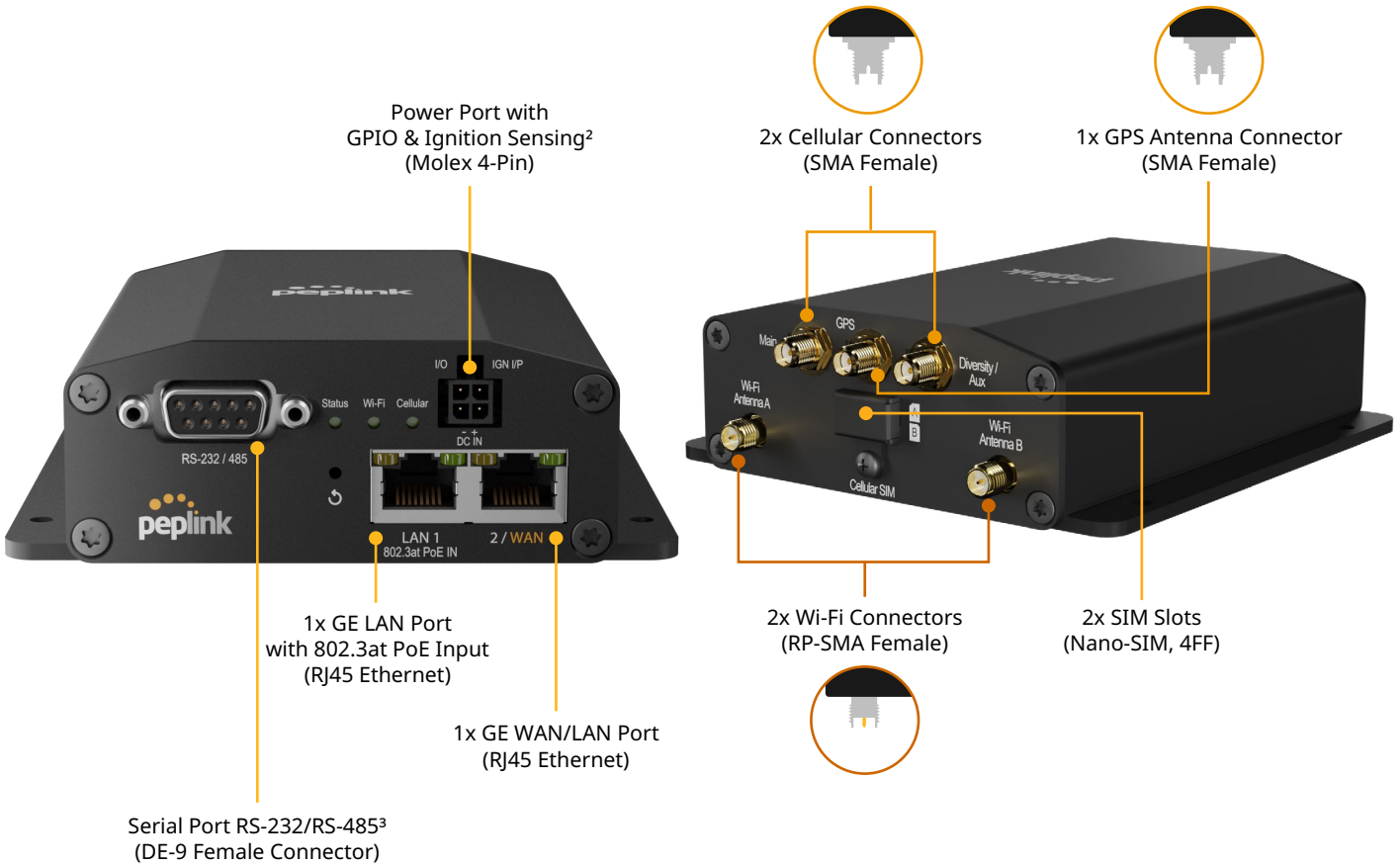


GPS Active Antenna
(1 pc, SMA Male)

¹ The power supply plug will vary according to region.

Interface Layout

BR1 Mini M2M



*Use the black pinouts for standard single-port connections, and the yellow pinouts for routing a second device via a Y-cable.

² Click [here](#) to explore GPIO and Ignition Sensing features.

³ RS-232 and RS-485 Electrical Specifications

Feature	RS-232	RS-485
Logic 0	+3V to +15V	Diff: A<B (at least -200mV)
Logic 1	-3V to -15V	Diff: A>B (at least +200mV)
Dead Area	-3V to +3V	-200mV to +200mV
Max Voltage	±18V	-7V to +12V
Max Distance	~15 meters	~1200 meters