

PEPWAVE



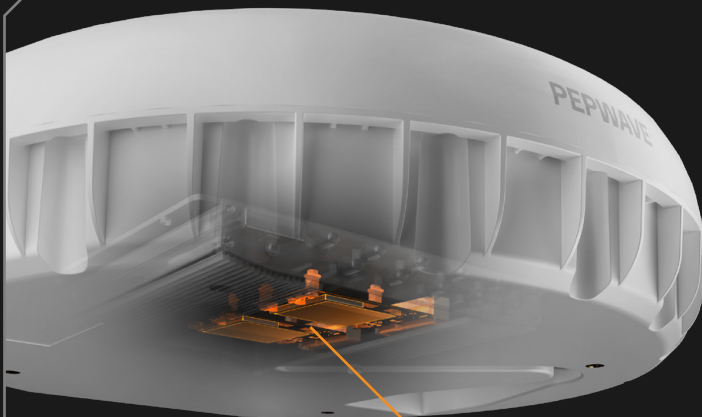
Antenna **MAX Duo**

- **Twice the Connectivity. One Seamless Enclosure.** •
Integrated Dual-Modem or Dual-Router Antenna Housing

TAA 
COMPLIANT

MAXed Out Synergy

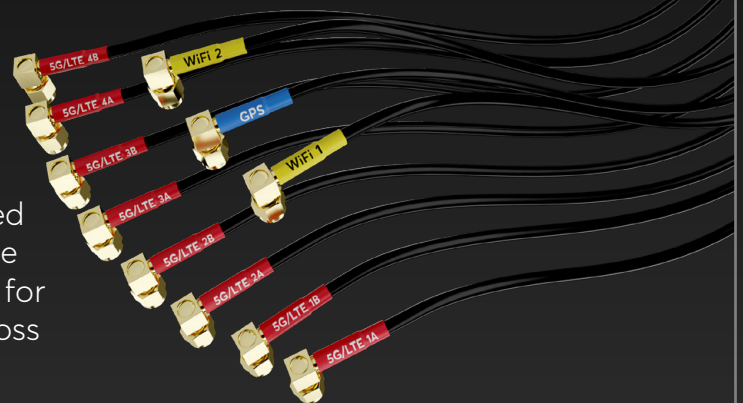
Two Modems.
One Setup.
Unlimited Possibilities.



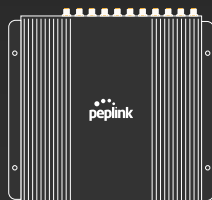
2x

5G/LTE
Modem

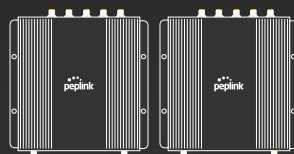
Featuring **8x 5G/LTE**, **2x Wi-Fi**, and **GPS** antenna elements, the Antenna MAX Duo delivers reliable connectivity using **two modems** housed in a single, ruggedized enclosure. The integrated design removes the need for external RF cabling, reducing signal loss and setup complexity.



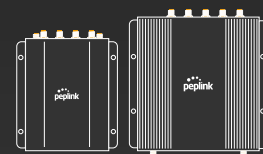
- Supported dual-modem Peplink router setups include:



[BR2 Pro]



[2x BR1 Pro 5G]*

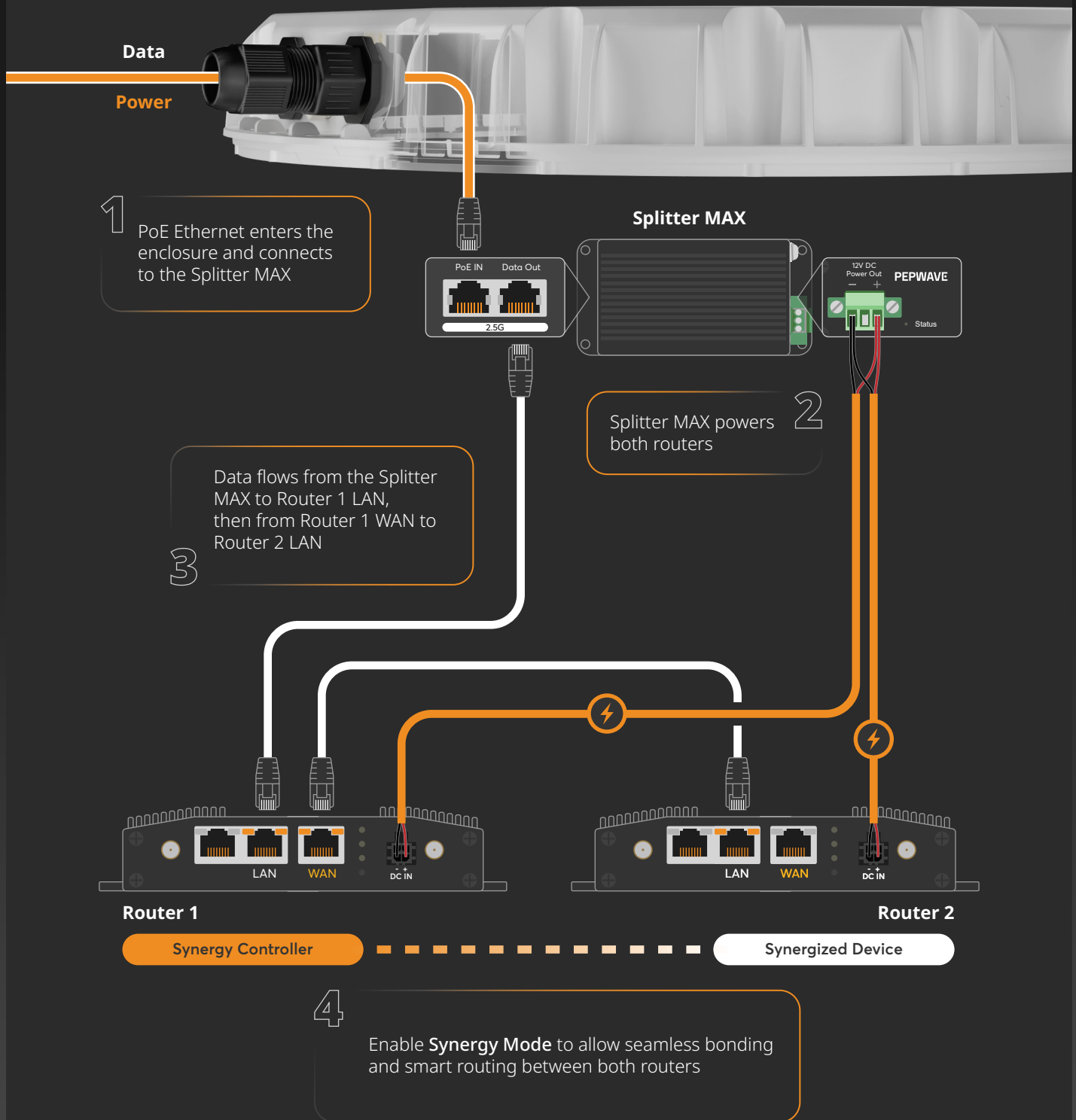


[BR1 Mini 5G + BR1 Pro 5G]*

*Splitter MAX is required to provide power when more than one router is used.

Using the Splitter MAX, both connectivity and power are managed through a single PoE cable, simplifying installation and reducing cable clutter.

- Suggested cable path for dual-router setups:





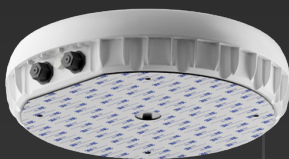
MAXed Out Ruggedness

Built to endure the elements, the Antenna MAX Duo is engineered for harsh environments with a **UV-stable, waterproof IP67-rated** enclosure and **flame-retardant, UV-resistant** plastics. Compliant with **MIL-STD 810F salt spray standards**, it's ready to perform reliably on land, at sea, and on the move.

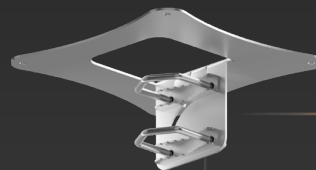
MAXed Out Flexibility

Whether installed on a vessel, vehicle, or fixed location, the Antenna MAX Duo adapts to your deployment.

- Set it up how you see fit with multiple mounting options:

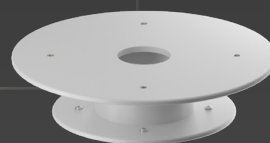


Surface Mount



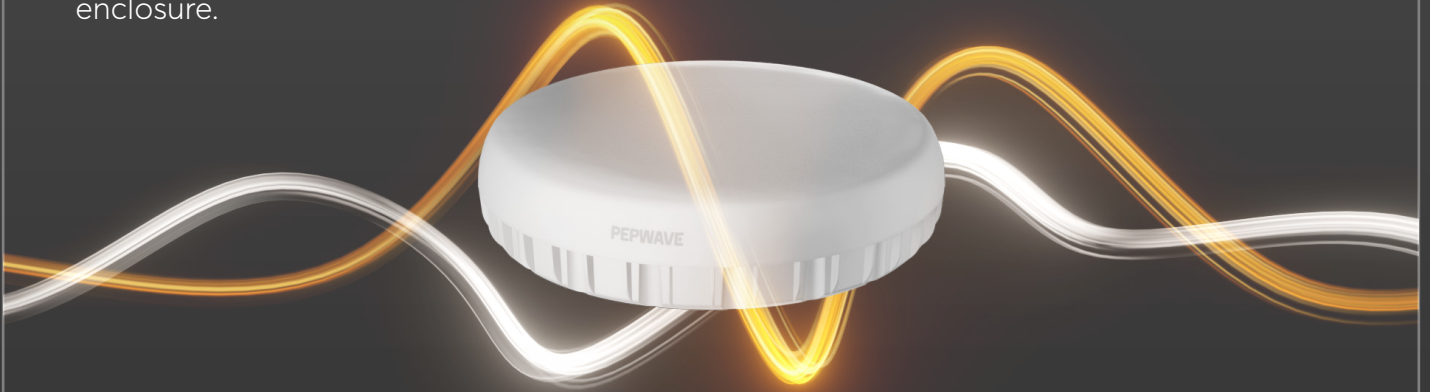
Pole Mount
(vertical or horizontal)

Compatible with standard 3rd party maritime
VSAT dome mounts
(not included in package)

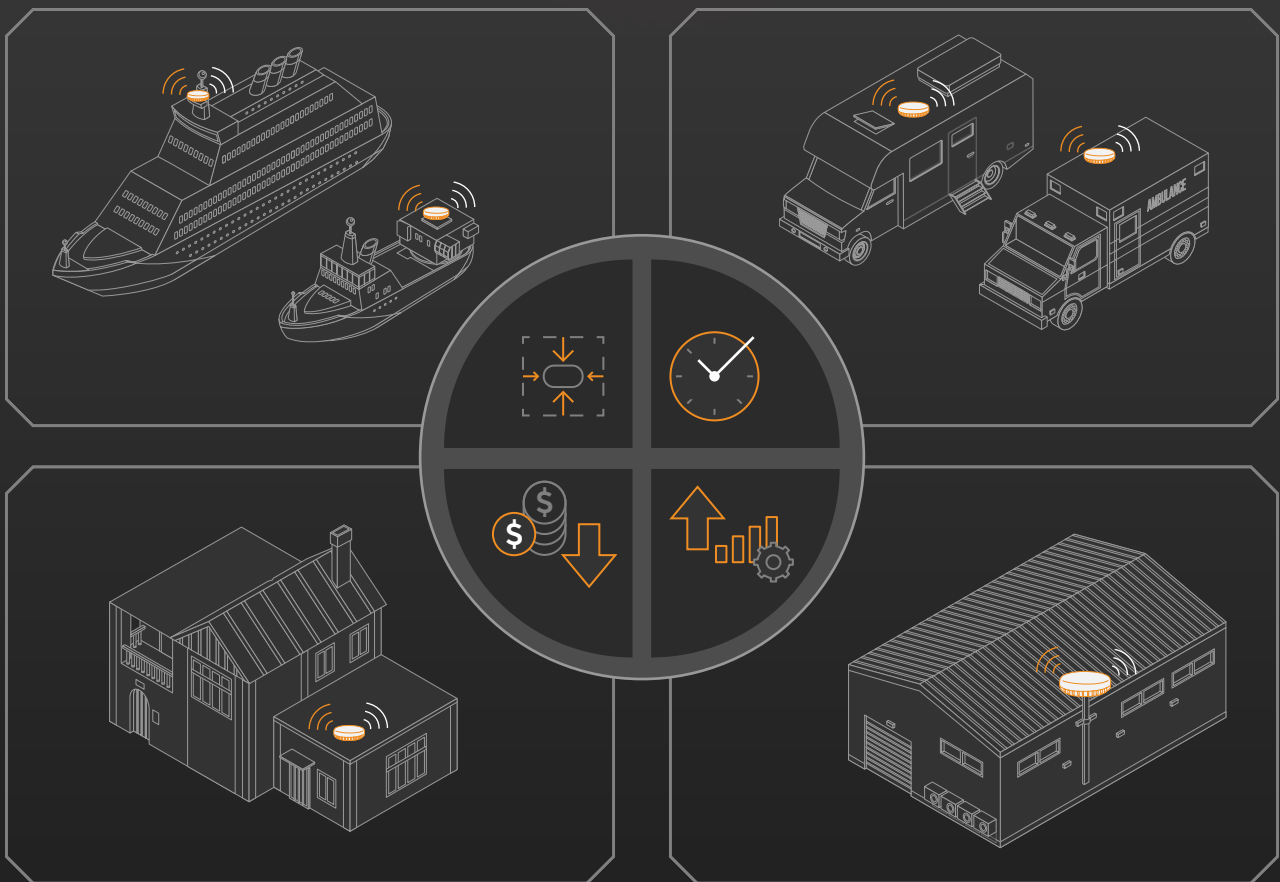


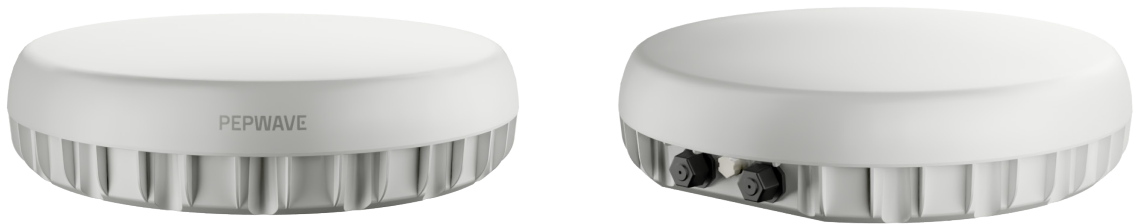
MAXed Out Savings

The **Antenna MAX Duo** delivers unmatched value by combining high-performance antenna arrays, robust protection, and dual-modem support into a single, compact enclosure.



It's a **space-efficient, time-saving, cost-effective, and performance-maximizing solution** for maritime, mobile, enterprise, and remote deployments.





Specifications

Cellular		Wi-Fi	
Antenna Elements	8 elements	Antenna Elements	2 elements
Peak Gain & Frequencies	5.6dBi: 617-960MHz 6.5dBi: 1410-2700MHz 8.1dBi: 3400-4400MHz 7.4dBi: 5000-6000MHz	Peak Gain & Frequencies	5.4dBi: 2400-2500MHz 7.4dBi: 5000-6000MHz
VSWR	< 2.5 over 95% of the band	VSWR	< 2.5
Feed Power Handling	10W	Feed Power Handling	10W
Input Impedance	50 Ω	Input Impedance	50 Ω
Polarisation	Linear	Polarisation	Linear
Connectors	Right angle SMA male	Connectors	Right angle RP-SMA male
GPS			
Frequency Range	1575-1602 MHz		
Peak Gain	0.9dBi@1575MHz 0.8dBi@1602MHz		
VSWR	< 2.0		
Gain: LNA	27 ±3dB		
Noise Figure	2.5dB		
Operating Voltage	3.3V		
Power Consumption	10 ±3.0mA		
Connectors	Right angle SMA male		

Specifications are subject to change without notice.

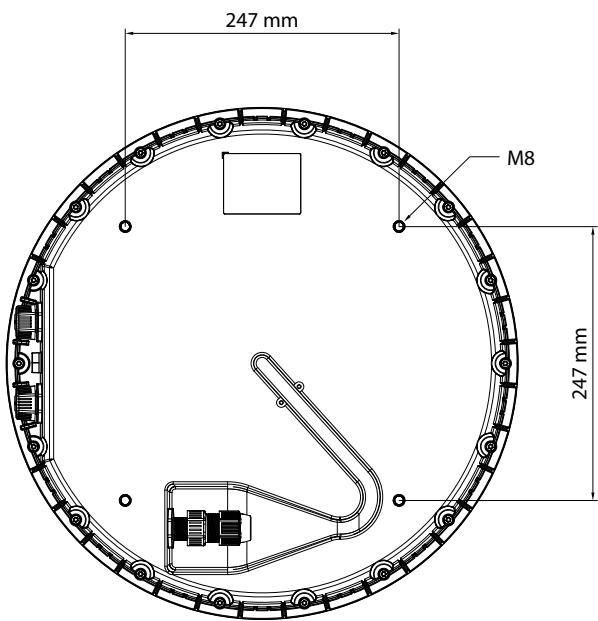
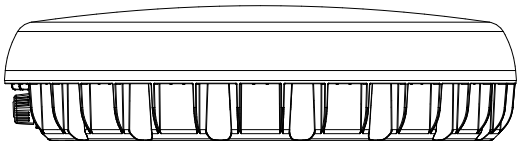
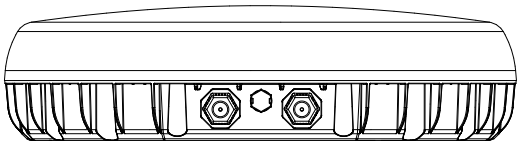
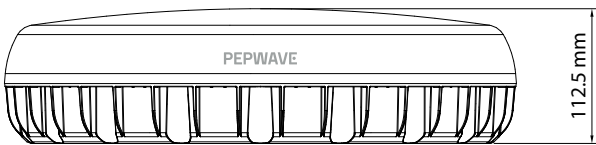
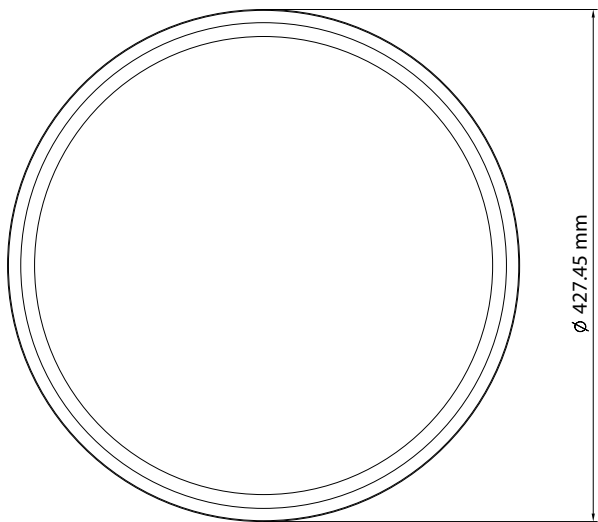
Specifications

Mounting		Mechanical	
Supported Types	Surface, Pole	Product Dimensions	4.82" / 122.5 mm - Height 16.83" / 427.5 mm - Diameter
Package Contents		Packaged Dimensions	21.97" x 25.51" x 16.46" / 558 x 648 x 418 mm
Package Contents	Antenna MAX Duo L-Mount Set Router fixation screws 5pcs Rubber Support TNF-19 3pcs Rubber Support TF-039 3pcs RJ45 glands 2pcs RJ45 caps 1pcs Double sided 3M adhesive pad 1pcs Ethernet cable (9.84" / 250mm) 1pcs Ethernet cable (14.96" / 380mm)	Enclosure Material	UV stable PC
Environmental, Compliance			
IP Rating	IP67	Compliance	ROHS, REACH, WEEE
Operating Temperature	-40° - 176°F / -40° - 80°C	Enclosure Flammability	UL 94 V-0 (1.47 mm)
Storage Temperature	-40° - 176°F / -40° - 80°C	UV resistance	UL 746C (F1 long-term UV exposure)
		Salt Spray	MIL-STD 810F/ASTM B117

Ordering Information

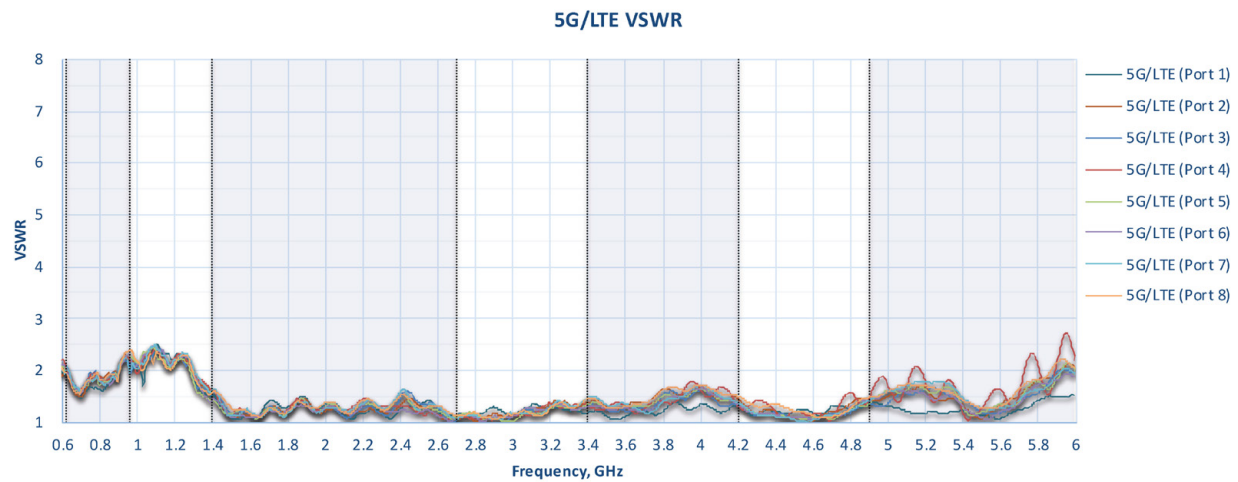
Product Code	Description
ANT-MAX-DUO	8xLTE/5G, 2x Wi-Fi, 1xGPS 600-6000MHz, IP67, SMA male (Cellular, GPS), RP-SMA male (Wi-Fi), White

Technical Drawing

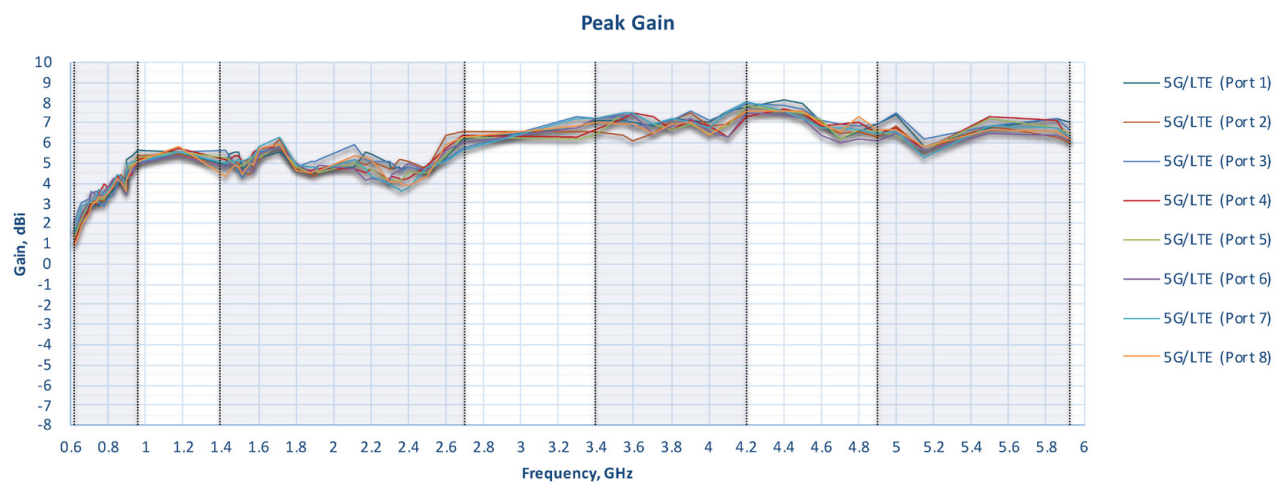


Cellular Antenna Performance

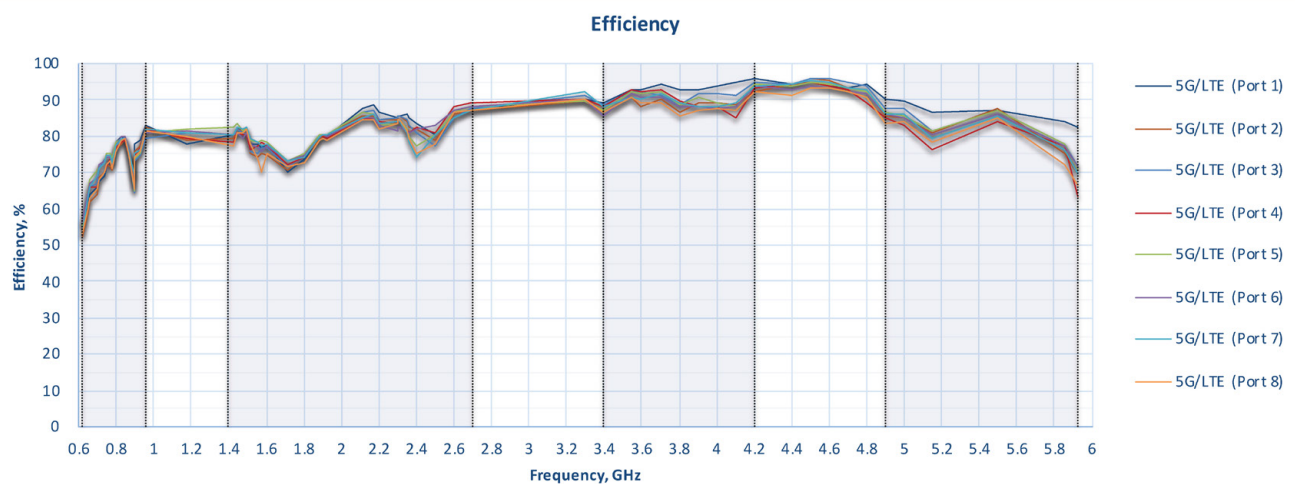
Cellular Antenna VSWR



Cellular Antenna Gain

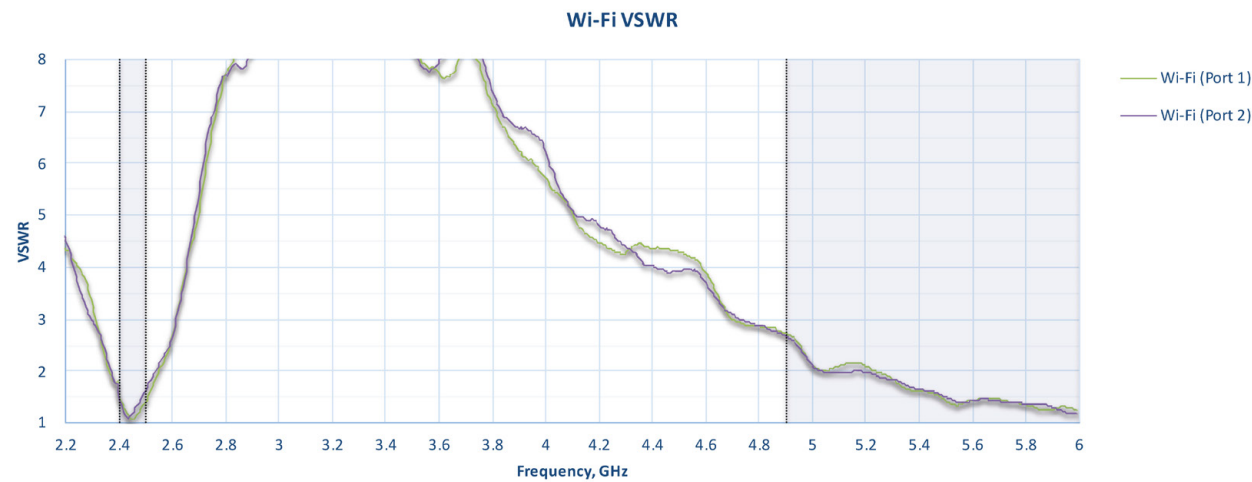


Cellular Antenna Efficiency

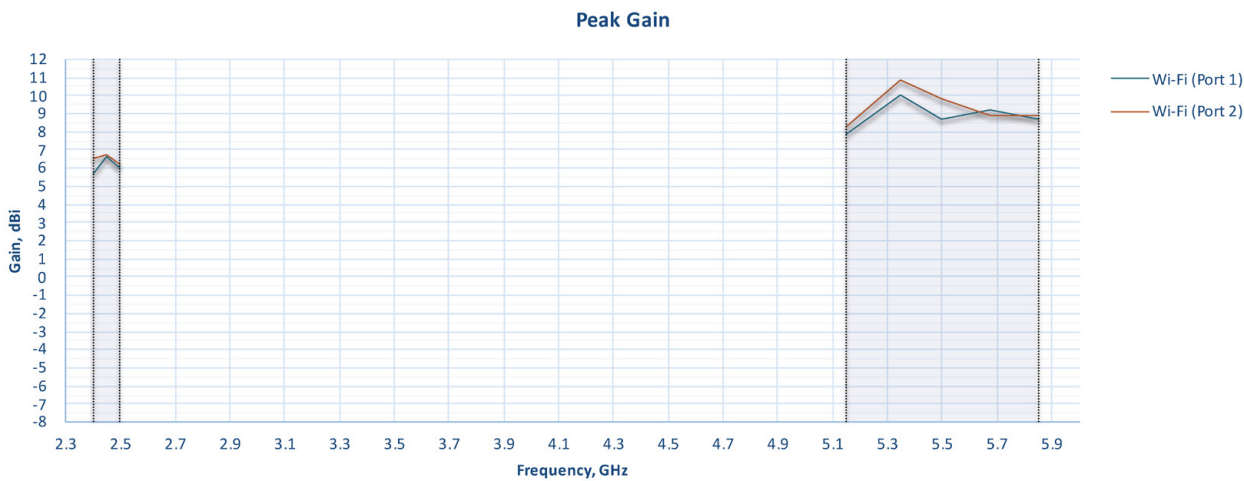


Wi-Fi Antenna Performance

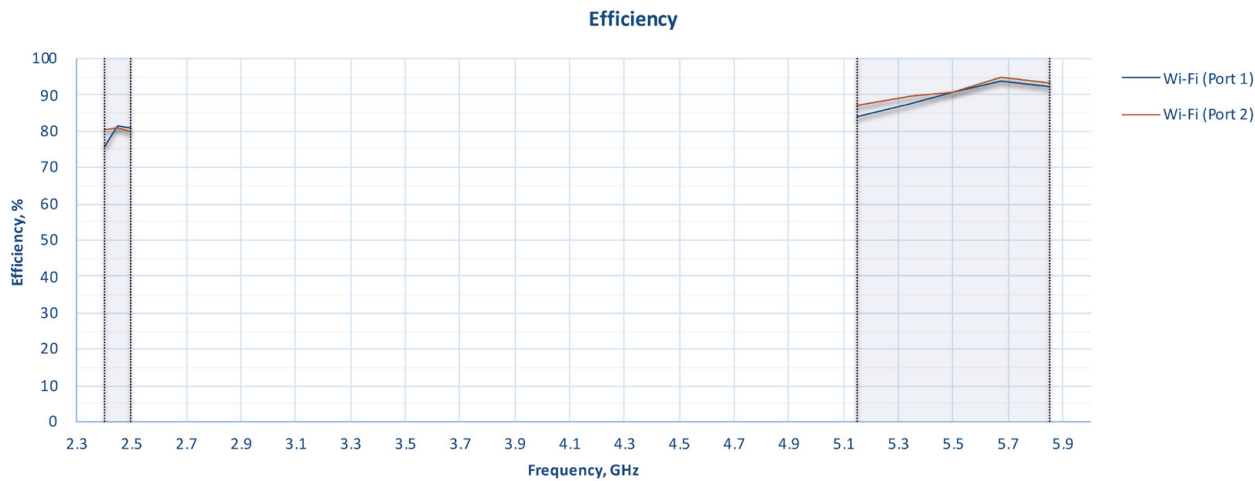
Wi-Fi Antenna VSWR



Wi-Fi Antenna Gain

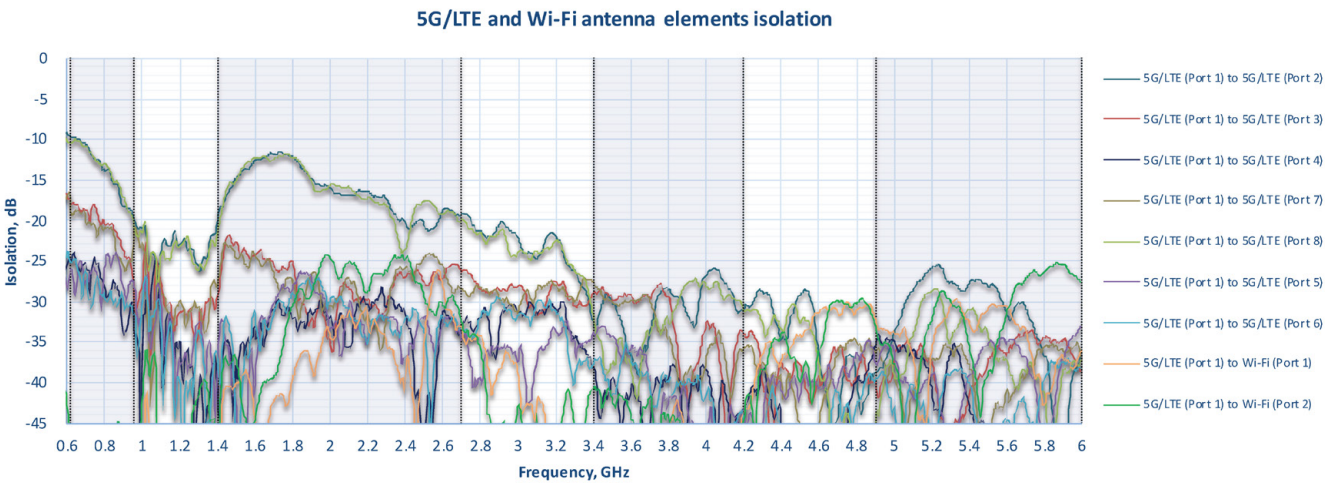


Wi-Fi Antenna Efficiency



Cellular & Wi-Fi Antenna Performance

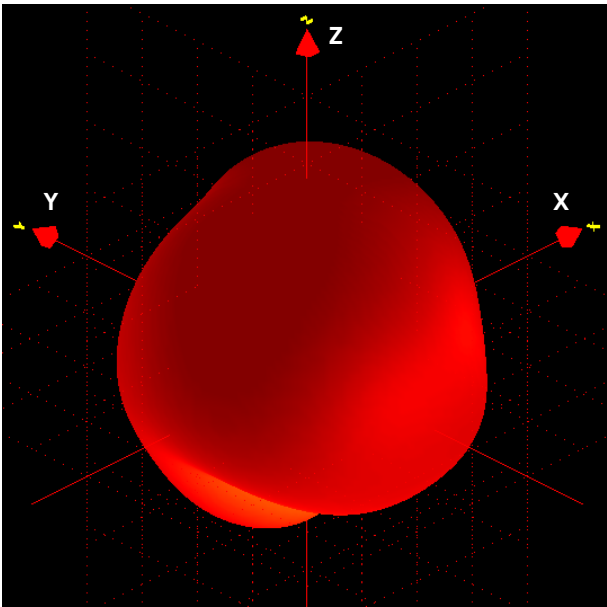
Cellular & Wi-Fi Antenna Isolation



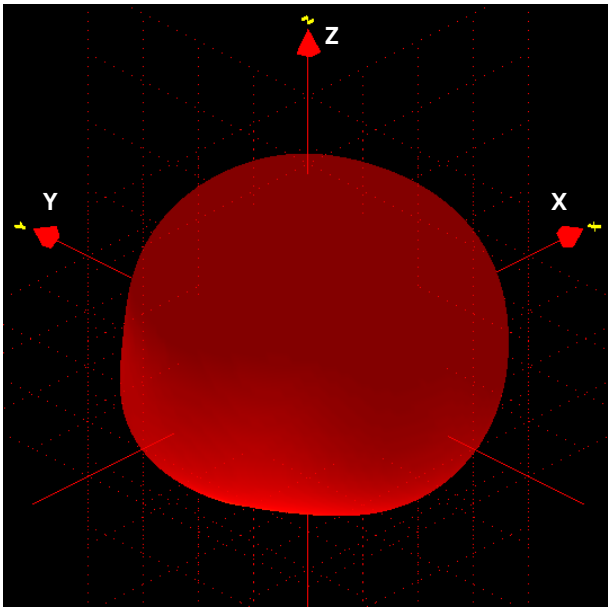
Cellular & Wi-Fi Antenna Performance

Typical Radiation Pattern

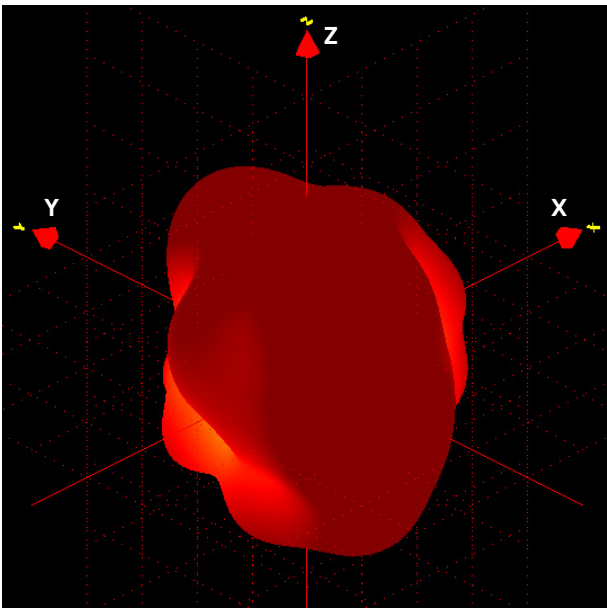
617 MHz



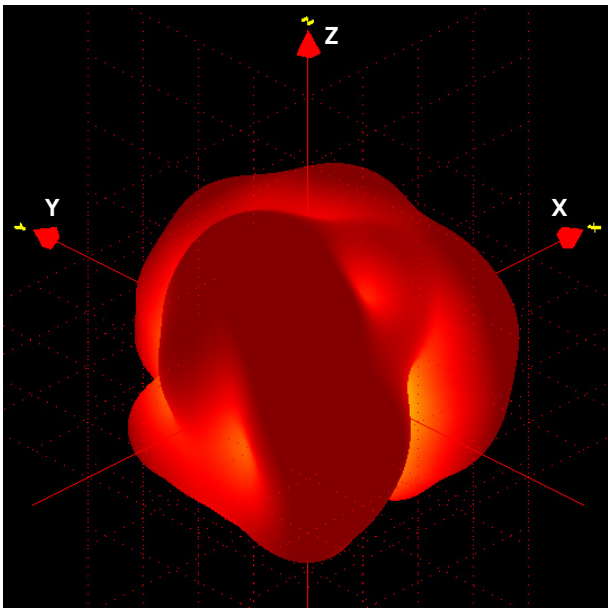
798 MHz



1496 MHz



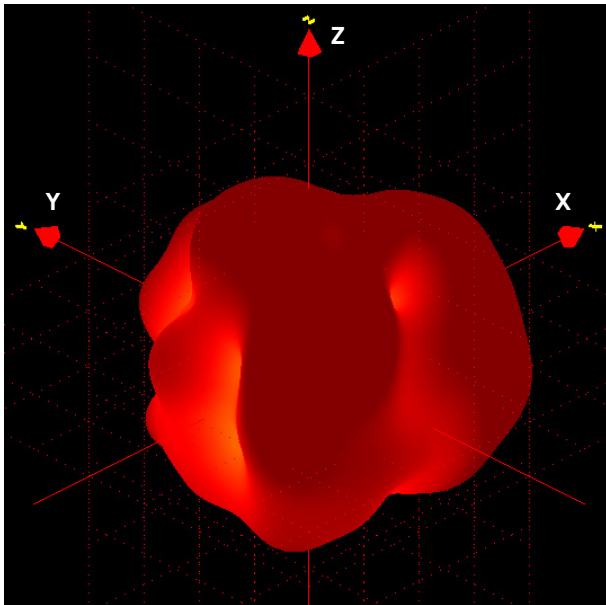
1805 MHz



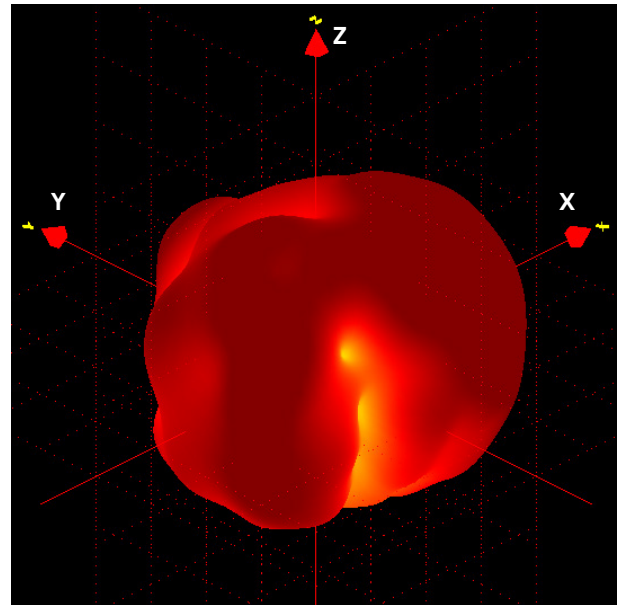
Cellular & Wi-Fi Antenna Performance

Typical Radiation Pattern

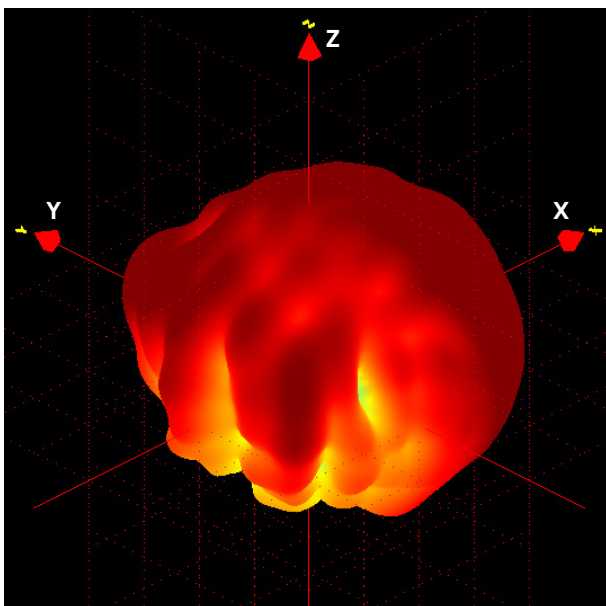
2110 MHz



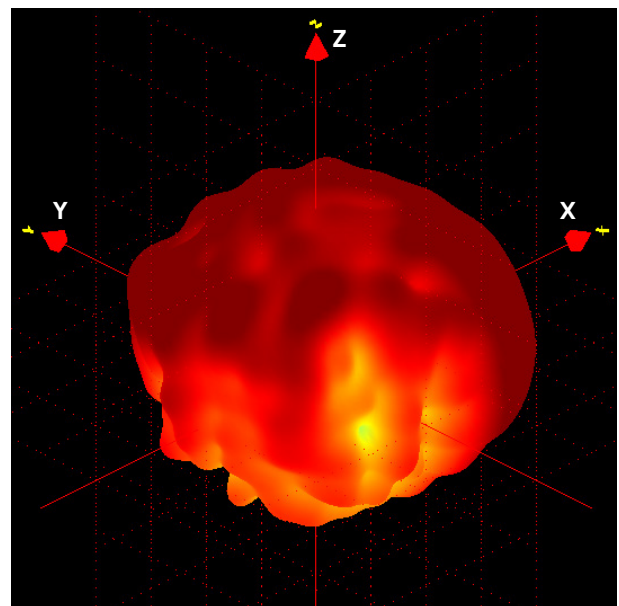
2400 MHz



3550 MHz

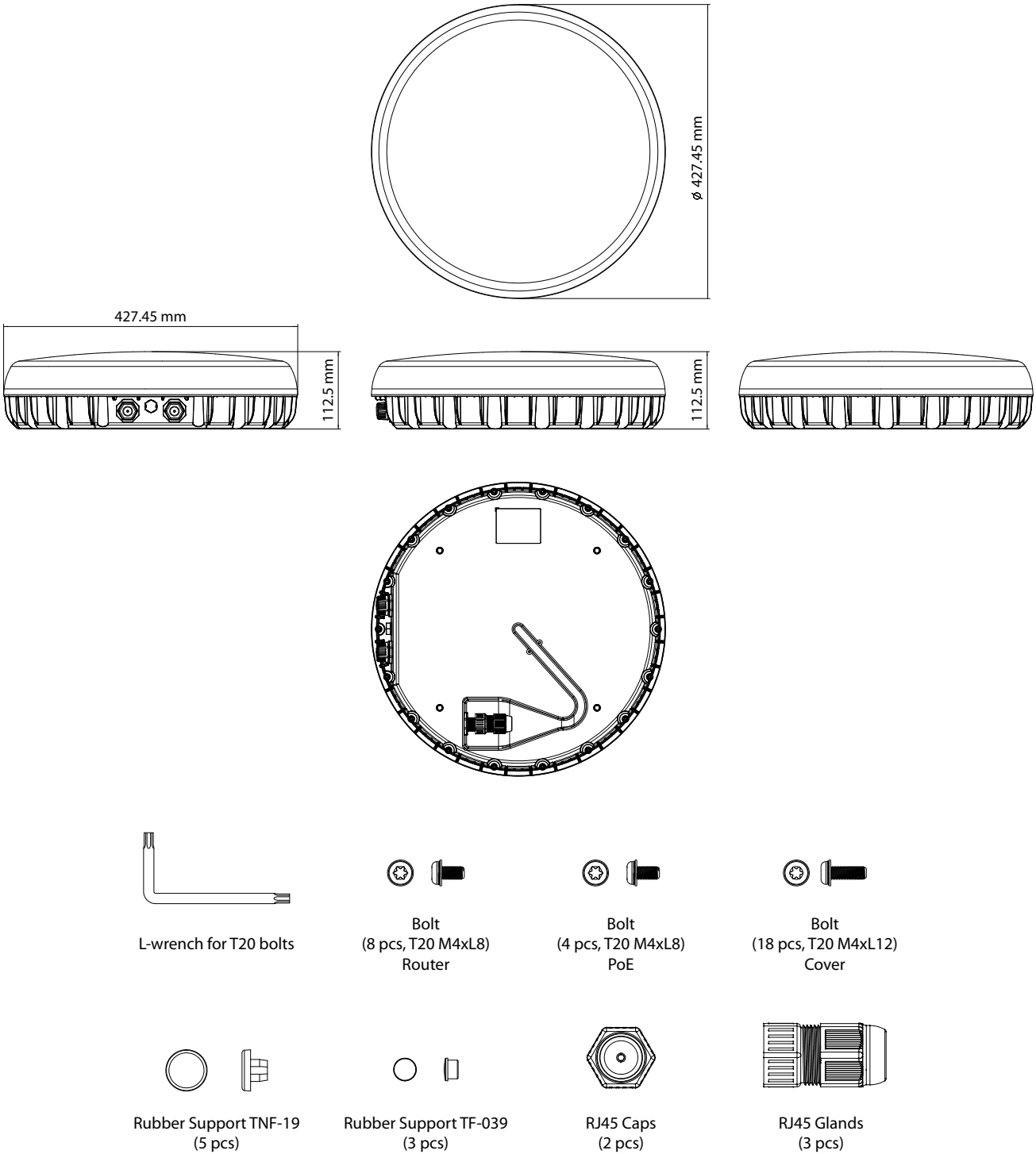


3800 MHz



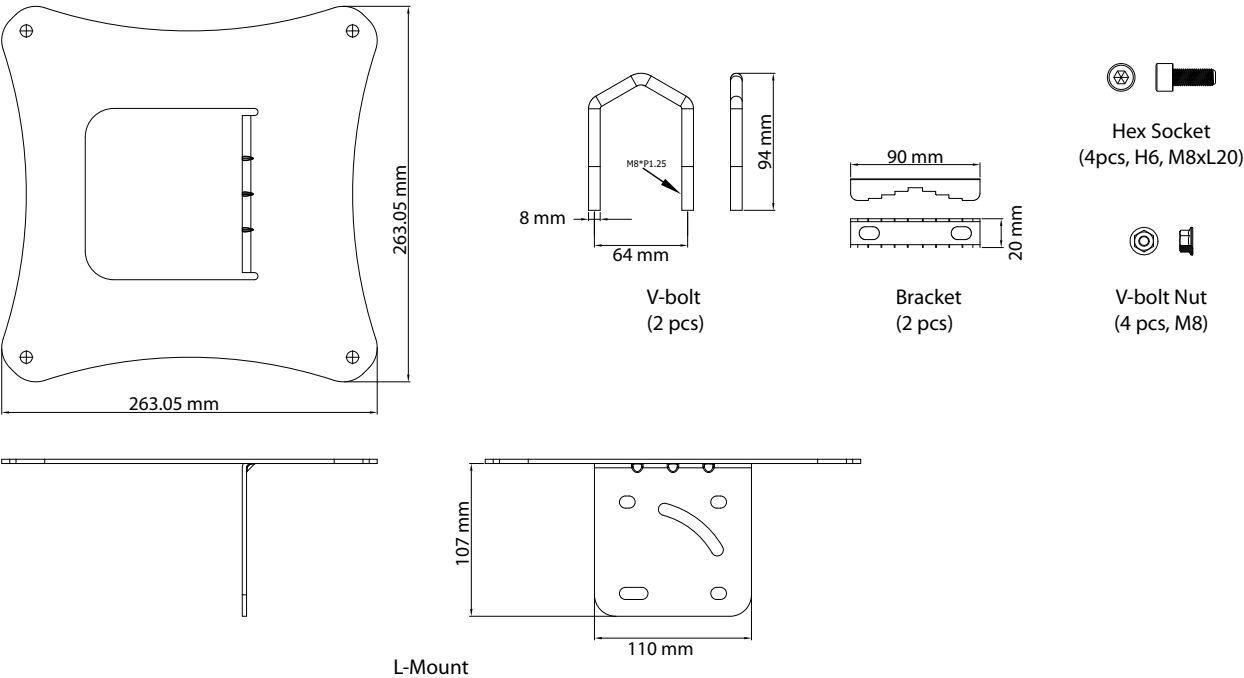
Packing List Information

Antenna

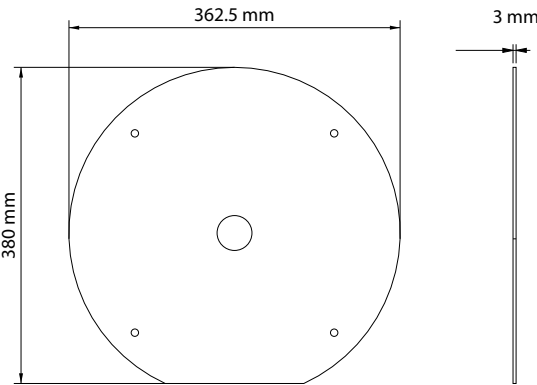


Packing List Information

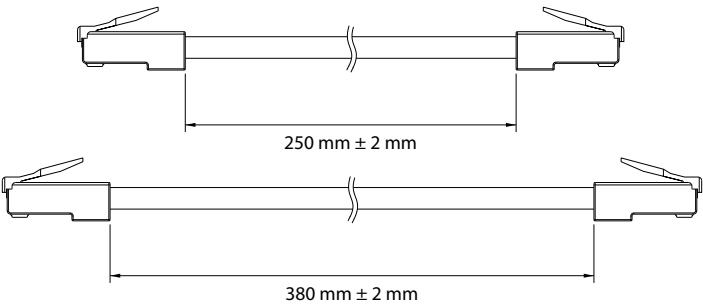
L-Mount Mount Set



Adhesive Pad



Cables



Ethernet Cable