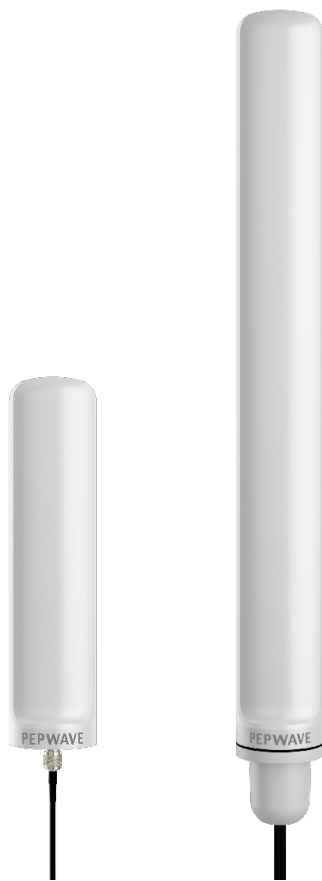


Maritime 10 / 20G / 40G

High-Gain Antennas Ready to Set Sail
With 5G Connectivity



FAQ

Is the Maritime 10 / 20G / 40G suitable for me?



For what application is this product best for?

The Maritime 20G and 40G are 5G-ready MIMO antennas suitable for maritime applications and fixed land installations. The antennas' omnidirectional pattern is perfect when there is a need to support connectivity to several cellular towers located in different locations.

The Maritime 10 not only has most features of its predecessors, but also a higher gain, which can reach 9.3dBi. Despite its relatively small size, this antenna enables extra long-range reception. It is suitable when you want ultra-reliable signal reception.



Why should I choose the Maritime 10 / 20G / 40G instead of other antennas?

Compared to other antennas, the Maritime series supports a very wide frequency range starting from 400MHz up to 6GHz. These antennas are suitable not only for long range applications when low bands are needed, but are also perfect for higher bands which are frequently used for 5G applications. In addition, the Maritime antennas support Wi-Fi bands (2.4GHz and 5GHz) and can be used as Wi-Fi WAN antennas for maritime applications. Maritime 20G and 40G also include an active GPS antenna making them a perfect all-in-one solution.



Which Peplink router is recommended for use with the Maritime series?

Peplink's Maritime antennas can be used with any Peplink router as the antennas are router-independent. Therefore, please choose a router based on your application. We recommend the BR1 and the MAX Transit for smaller vessels, and the MBX HD4 or the EPX for applications demanding more throughput. It is also recommended to check which bands are supported by the router. For maritime applications, long range low bands are critical and they vary from region to region.

What is included with the Maritime 10 / 20G / 40G?



What's in the box?

Along with the antenna, the box contains the following:

- Maritime mount set for mounting on a 1" 14 TPI mount.
- L-shape mount set for wall or pole mounting.
- 40G also includes 1" 14 TPI male mount (ACW-652).



Is a warranty included with this product?

Yes, all models in the Maritime series come with a 1-year warranty.



What are the antenna ordering options?

There are three antenna options available:

1. ANT-MR-10-N-W – 1x LTE/5G, 600-4200MHz, IP68, N-type, White
2. ANT-MR-20G-S-W-6 – 2x LTE/5G, 1x GPS, IP68, SMA, White, 6.5 ft / 2m
3. ANT-MR-20G-S-N-6 – 2x LTE/5G, 1x GPS, IP68, N-type, White, 6.5 ft / 2m
4. ANT-MR-40G-S-W-6 – 4x LTE/5G, 1x GPS, IP68, SMA, White, 6.5 ft / 2m

All antennas are available in white. Maritime 20G is with 2m cables terminating in SMA or N-type connectors, while Maritime 40G is with SMA connectors.



What can I do if I need a connection cable that is longer than 6.5 feet?

Please use expansion cables and if the cable is installed outdoors, please use additional sealing tape (e.g. amalgamating tape) since SMA connectors are not waterproof. However, please bear in mind that the goal is always to keep cables as short as possible to avoid any additional signal attenuation. For more details, please refer to the [Peplink Antenna Webinar](#).



What is the recommended spacing between antennas?

We would recommend keeping at least 2 ft (60cm) of spacing. The ideal case is to have antennas spaced out at at least 3x the wavelength, which depends on the frequency. For instance, the wavelength for 600MHz is 19.7" (50cm), while for 2.5GHz is 4.7" (12cm). Therefore, for lower bands, it is recommended to have antennas at at least 5 ft (150cm) apart.

Using the Maritime 10 / 20G / 40G



Is there any installation recommendation for the Maritime 20G / 40G?

Yes. Our datasheets ([10](#) / [20G](#) / [40G](#)) have some installation recommendations for the 1" 14 TPI adapter, wall mounts, pole mounts, etc.



Is the Maritime series a correct choice for outdoor applications?

Yes, definitely. These antennas were designed with harsh maritime conditions in mind. Both antennas are IP68 rated and only the highest grade materials were used to face long exposures to saltwater and UV, and to operate under any weather condition. Additionally, these antennas can withstand winds up to 100mph (160km/h).

Accessories



Are there any mounting accessories for the Maritime 10 / 20G / 40G?

Yes. We have a maritime grade 1" 14 TPI deck mount accessory. Click [here](#) to learn more about our Premium Deck Mounts.

What can I do if I need support?



Does Peplink offer support for this product? What if I have difficulties setting it up?

Firstly, Peplink Partners have an obligation to support the products they sell. Also, Peplink has an excellent and very active [forum](#). Among the regular forum participants are Peplink Partners, Peplink employees and many very knowledgeable users. Generally, responses are delivered rather quickly. In the unlikely event of a suspected hardware or firmware issue, you can enter a [support ticket](#) with Peplink directly. In the latter case, you will receive attention from some of the best engineers. Peplink supports its customers like no other!