

# AP Pro AX (HW3)

Super Rugged and Wi-Fi 6 Ready

## Built to Last

The durable metal **IP67 enclosure** ensures a rugged exterior, safeguarding both the device and your connection.



## Enterprise-Grade Roaming Speeds


Experience **seamless connectivity** no matter where you are. Enjoy the full speed of an office network, even while on the go.

## Mesh Capability

With **Wi-Fi mesh support**, deploy the device anywhere to extend coverage, overcome physical limitations, and eliminate network blind spots.



Preview


Free WiFi

☐ I have read and agree to the [Terms and Conditions](#)

Captive Portal Settings

Name

Company Name

Access Mode

Save Changes

## Turnkey Captive Portals

Effortlessly create and customize your captive portals. Set up a **guest network** with just a few clicks.

## Seamless **Integration** within Peplink's Ecosystem

Fully integrated with the **Peplink Ecosystem**, easily connect the new access point to your network for instant, hassle-free connectivity.



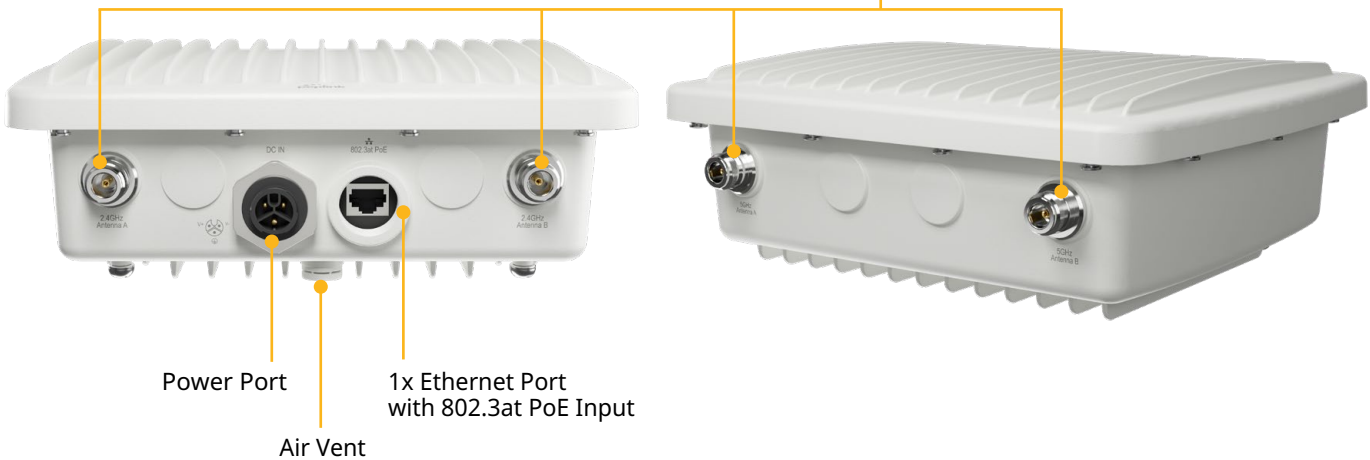
## Perfect for **Demanding Deployments**

Deliver **Wi-Fi 6** connections to factories, construction sites, or harbors - designed to perform in any weather, under any condition.

# AP PRO AX (HW3)



4x N-type Wi-Fi Antenna Connectors



## Specifications

<b>Ethernet Ports</b>	1x 10/100/1000M Ethernet	<b>Power Input</b>	802.3at PoE+ <sup>2</sup> Power Port: 12V DC
<b>Wi-Fi Standard</b>	Simultaneous Dual-Band (2.4GHz/5GHz) Wi-Fi 6 2X2 MIMO	<b>Power Consumption</b>	14.5W (max.)
<b>Data Rates</b>	2.4 GHz: up to 574 Mbps 5 GHz: up to 1200 Mbps	<b>Operating Temperature</b>	-40°F - 149°F -40°C - 65°C
<b>Channel Width</b>	20/40/80 MHz	<b>Warranty</b>	1-Year Limited Warranty
<b>Recommended clients per Radio</b>	256	<b>Network</b>	Bridge Mode Router (NAT) Mode Mesh Wireless Distribution System (WDS) Support for PPPoE, Static IP, DHCP Management VLAN Spanning Tree Protocol
<b>SSID Per Radio</b>	16	<b>Radio</b>	Multiple SSID Auto Channel Selection Transmit Power Adjustment Neighbor AP Detection
<b>Transmit Power</b>	2.4GHz: 24dBm 5GHz: 25dBm	<b>AP Security</b>	Open (No Encryption) Enhanced Open (OWE) WPA3 – Personal WPA3 – Enterprise WPA2/WPA3 WPA2 – Personal WPA2 – Enterprise WPA/WPA2 – Personal WPA/WPA2 – Enterprise
<b>Antenna</b>	External Omni Directional Antennas <sup>1</sup> 2x 8dBi - 2.4GHz 2x 8dBi - 5GHz	<b>Device Management</b>	Web Administrative Interface InControl Cloud Management Peplink AP Controller SNMP v1, v2c and v3
<b>Connector type</b>	4x Female N-Type Wi-Fi Antenna Connectors		
<b>Enclosure</b>	Plenum-rated enclosure (Waterproof IP67 Outdoor)		
<b>Dimensions</b>	10.0 x 8.9 x 3.1 inches 255 x 225 x 78 mm		
<b>Weight</b>	4.44 pounds / 2.02 kg		

<sup>1</sup> External Omni Directional Antennas are not included in the package.  
<sup>2</sup> AC/DC adapter and PoE Injector are not included.  
Specifications are subject to change without notice.

## Specifications

Client Management	Per SSID VLAN with QoS (802.1p/802.1q) Bandwidth Control MAC Address Filtering Layer 2 Client Isolation Limit on Max. Number of Clients	Captive Portal by InControl	
	Per Client VLAN with RADIUS VLAN with VLAN Pool Bandwidth Control Multicast Filter IGMP Snooping/Multicast Enhancement	Package Contents	1x AP Pro AX 1x Waterproof M25 Ethernet cable gland 1x Waterproof DC power plug 1x Waterproof cover for DC Power Connector 1x Mounting kit 1x M6 screw set 1x Wall screw with anchor set

## Ordering Information

Product Code	Description
APP-AX-IP67	2 x 2 MU-MIMO Wi-Fi 6 AP, Simultaneous Dual-Band 802.11a/b/g/n/ac/ax, Industrial-grade in a waterproof and dust-tight IP67 outdoor enclosure.

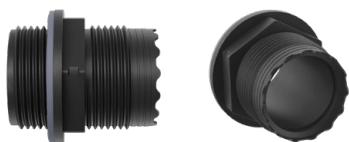
## Featured Add-on

Product Code	Description
ACW-107	802.3af/at PoE Injector. Compatible with MAX Hotspot and AP One AX Series
ACW-825	2.4GHz & 5GHz Outdoor Wi-Fi Antenna Kit include 2x 2.4GHz and 2x 5GHz Outdoor Wi-Fi Omni Antenna (2x ACW-202 & 2x ACW-308)

## Installation Guide

### Ethernet Connector

#### In the kit:



Component A



Component B



Component C



Component D

#### You have to prepare:

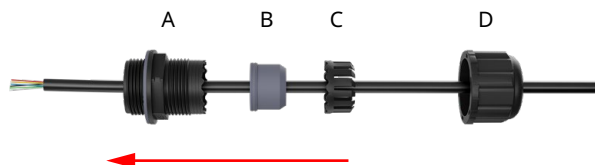


RJ45 Plug



Ethernet Cable  
with Exposed Conductors

**Step 1:** Guide the cable through components A, B, C and D carefully.



**Step 2:** Insert the conductors into the RJ45 plug, ensuring that each conductor follows the correct color sequence.



**Step 3:** Plug the cable into the Ethernet port.



**Step 4:** Tighten components A and D.



## Installation Guide

### DC Power Connector

#### In the kit:



Component A



Component B



Component C



Component D



Component E



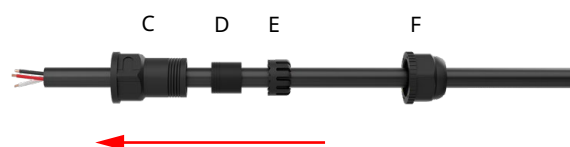
Component F

#### You have to prepare:

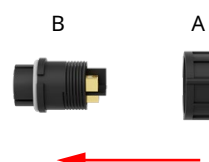


DC Power Cable  
with Exposed Conductors

**Step 1:** Guide the cable through components C, D, E and F carefully.



**Step 2:** Anchor components A to B.



**Step 3:** Insert the conductors into the golden pin and secure them with a screwdriver, ensuring each conductor is properly positioned.

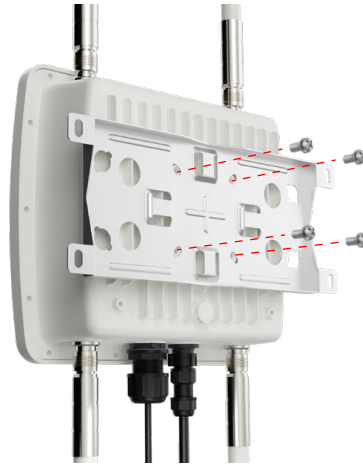


**Step 4:** Tighten components A, C and F.





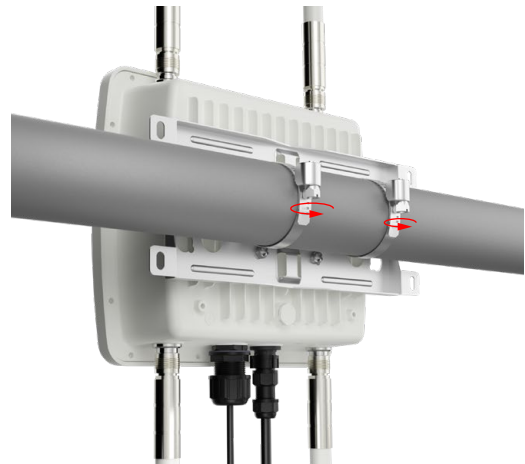
## Installation Guide



Pole Mount (Vertical)



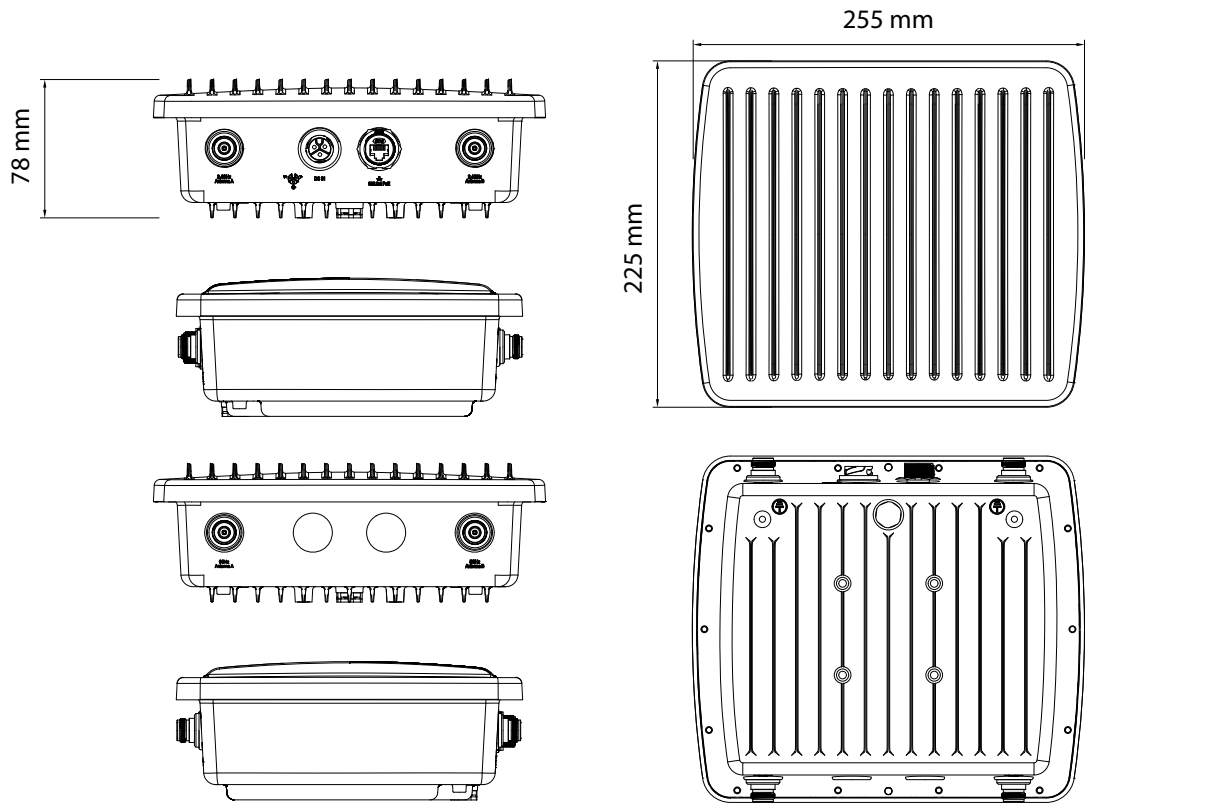
Pole Mount (Horizontal)



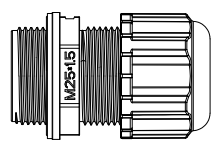
Wall Mount



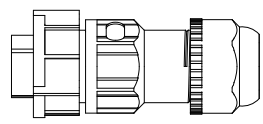
## Packing List Information



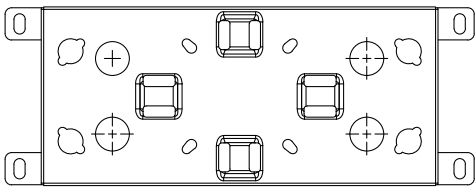
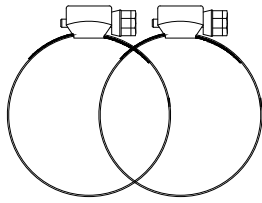
DC Connector Cover



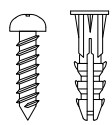
M25 Ethernet Cable Gland



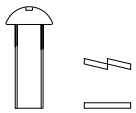
DC power plug



Mounting kit



Wall screw with anchor set  
(4 pcs)



M6 screw set  
(4 pcs)