

Easy Set Up, Affordable

To configure all your AirProbes, visit InControl to remotely access the Web UI for AirProbe, or push a single configuration file to a group of them. Manage hundreds of AirProbes without having to go onsite. InControl Wi-Fi Diagnostic

service is affordable: First year of service included. \$99 per year thereafter. For Wi-Fi diagnostic hardware to deploy onsite, we offer 3 SKUs:

PRB-11N



PRB-AC2



PRB-AC3



Wi-Fi Standard	Simultaneous 802.11a/n and 802.11b/g/n	Simultaneous 802.11ac/a/n and 802.11b/g/n	Simultaneous 802.11ac/a/n and 802.11b/g/n
Dimensions	3.4 x 3.4 x 2.1 inches 86 x 86 x 53 mm	3.9 x 3.9 x 0.8 inches 98 x 98 x 19.7 mm	6.8 (diameter) x 1.5 inches 173 x 38 mm
Weight	0.37 (US) / 0.34 pounds 170 (US) / 155 grams	0.33 pounds 150 grams	0.57 pounds 260 grams
Power Input	48V DC Connector 802.3af/802.3at PoE	12V DC Connector 802.3af PoE	802.3af PoE
Power Consumption	15W (max.)	12W (max.)	13W (max.)
Operating Temperature	-4° - 104°F -20° - 40°C	23° - 113°F -5° - 45°C	23° - 113°F -5° - 45°C
Humidity	15% - 95% (non-condensing)		
Warranty	1-Year Limited Warranty		

Ordering Information

AirProbe Cloud Wi-Fi Diagnostic Service

Product Code	Description
PRB-IC2-1Y	1-Year extension of subscription for AirProbe cloud Wi-Fi diagnostic service
PRB-IC2-2Y	2-Year extension of subscription for AirProbe cloud Wi-Fi diagnostic service

AirProbe

Product Code	Description
PRB-11N	Wi-Fi analysis probe, supports 802.11a/b/g/n, first year cloud service included
PRB-AC2	Wi-Fi analysis probe, supports 802.11ac/a/b/g/n, 2x2 MIMO, first year cloud service included
PRB-AC3	Wi-Fi analysis probe, supports 802.11ac/a/b/g/n, 3x3 MIMO, first year cloud service included

www.peplink.com

©Peplink. All rights reserved. Pepwave, the Pepwave logo, and SpeedFusion are trademarks of Peplink International Ltd. Other brands and product names are trademarks or registered trademarks of their respective holders. All specifications are subject to change without notice.

AirProbe

Cloud Wi-Fi Performance Diagnostics



Relieving the Pain of Operating Wi-Fi Networks

Without the adequate diagnostic tools, Wi-Fi network administrators often need to react to service outages as they occur. With Airprobe and Cloud Wi-Fi diagnostics, Administrators are equipped to proact instead of react.



Deployment Needs:

Not Enough Info to Troubleshoot

Even if a problem is reported, there is not enough info for troubleshooting.

Service Performance Unknown

Unable to tell how the network is performing at any given moment.

Last to Know When Trouble Occurs

Administrators often only know about outages when customers complain.

Pepwave Solutions:



Wi-Fi Diagnostic Tools & Recording

Deploy Airprobes throughout the network to collect information. All records are available on the cloud.



Automated Client Testing

The Airprobes also function as Client simulator, testing the performance of the Wi-Fi network 24/7.



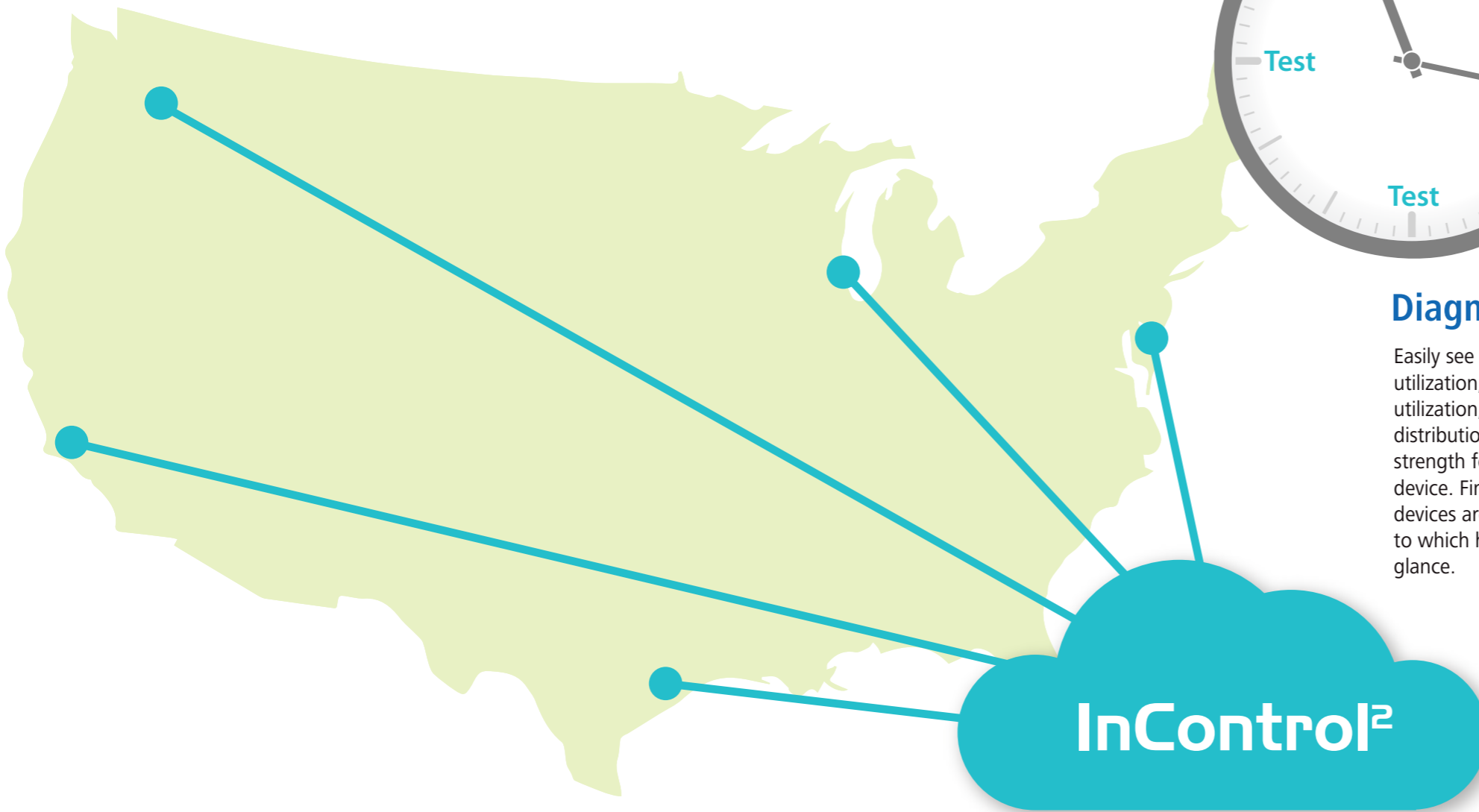
Alerts and Alert-Triggered Tests

If test results fall below certain parameters, network admin will receive instant notification.

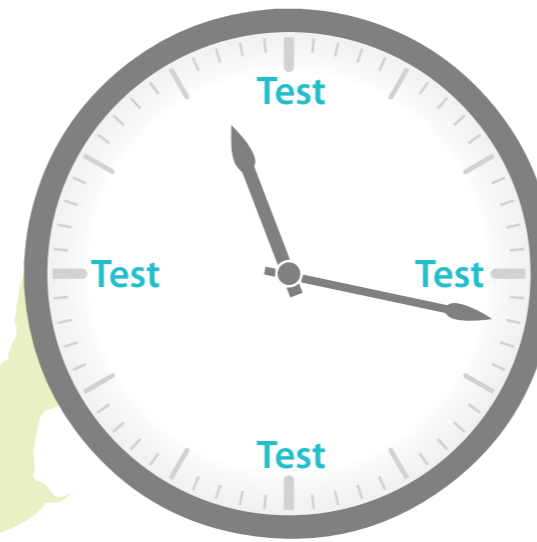
See it All in the Cloud

The InControl cloud Wi-Fi diagnostic platform lets you survey what's going on. Easily view the status of all your networks on one screen. Examine reports from all AirProbes, all presented in one place. Play back the Wi-Fi performance info for any

AirProbe at any point in time. And never worry about losing your past history: if any device gets reset, the Wi-Fi performance records remain on the cloud, giving you information to assist in your troubleshooting.



Scan and Test While You Sleep

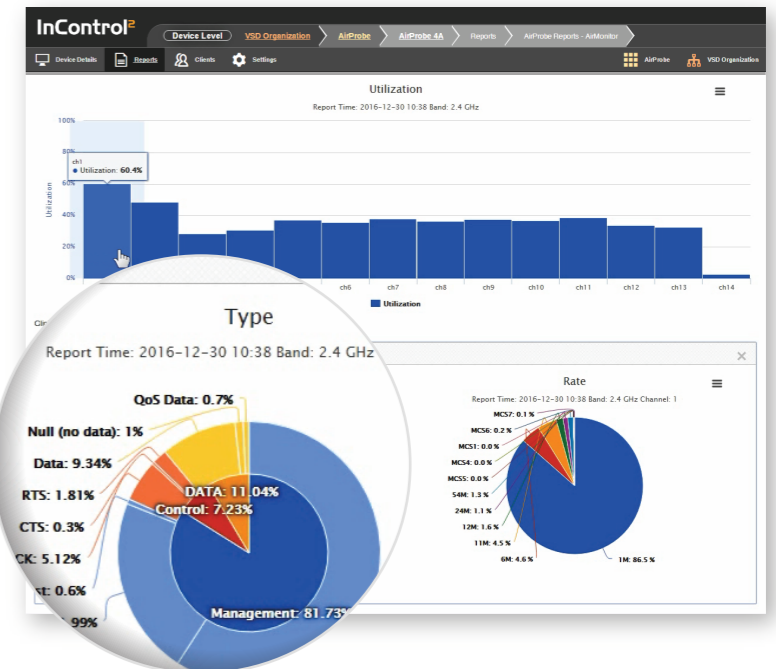


Bandwidth...
Ping...
Upload Speed...
HTTP...
DNS...

Scan your network environment day and night. Perform automated and scheduled tests for bandwidth, ping, upload speed, download speed, and application level (HTTP/DNS) performance. You will receive alerts by email if the signal strength is too weak or if a Wi-Fi channel is over-utilized. All these tests can be triggered by alerts, saving you precious time. It's like having a 24/7, on-site IT engineer who doesn't charge by the hour.

Diagnostics at Your Fingertips

Easily see the Wi-Fi utilization, channel utilization, packet distribution, and signal strength for each Wi-Fi device. Find out which devices are connected to which hotspots at a glance.



How it Works:

