

MBX 5G

5G Quad Cellular Mobile Powerhouse

peplink | PEPWAVE

Best of both worlds

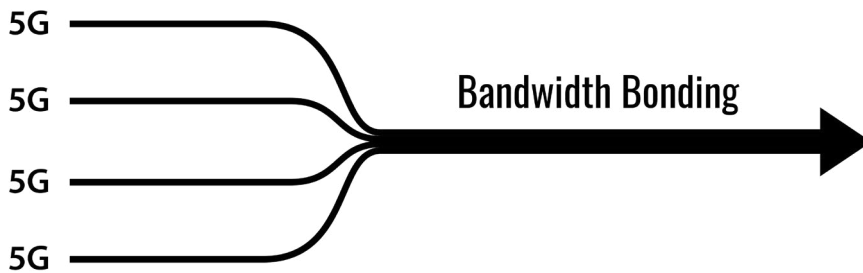
MBX 5G is a quad cellular mobile powerhouse with redundant SIM slots and multi-radio capabilities providing speed, reliability, and coverage by combining the best of 5G and LTE.

Portability

Its compact form allows it to be deployed in a wide variety of situations such as vehicles, vessels, and branch networks.

Compatibility with SIM injector

Its compatibility allows for upgradable modules for further customization to suit any deployment needs.

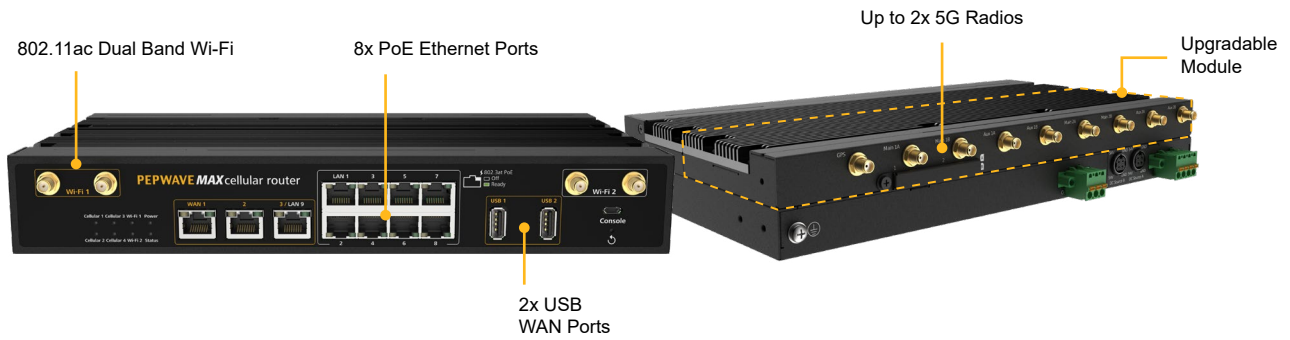


Optimize your traffic

Whether you need speed or cost-effectiveness, use Traffic Steering to guide each packet to the most suitable connection.



HD2 MBX 5G⁺



Specifications

WAN Interface	2x Embedded Cellular Modems with Redundant SIM Slots 3x GE* 2x USB 2.0 Interface	Power Output	Up to Eight 802.3at PoE Outputs*
LAN Interface	9x GE*	Power Consumption	55 W (max.)
Wi-Fi Interface	802.11ac/a/b/g/n, 1166 Mbps 2x2MIMO Wi-Fi WAN and/or AP Simultaneous Dual-Band	Dimensions	1.7 x 11.5 x 7.0 inches 43 x 292 x 177 mm
Router Throughput	2.5 Gbps	Weight	7.28 pounds 3.3 kg
PepVPN Throughput (No Encryption)	600 Mbps	Operating Temperature	-40°– 149 °F -40°– 65 °C
PepVPN Throughput (256-bit AES)	500 Mbps	Humidity	15%–95% (non-condensing)
5G Cellular Data Rate® (Downlink/Uplink)	5G: 4 Gbps / 700 Mbps LTE CAT-20: 2 Gbps / 150 Mbps	Certifications	FCC, CE, RoHS, E-Mark, PTCRB, Shock and Vibration Resistance: EN 61373:1999 IEC 61373:1999 Railway Applications: EN 50155 Electromagnetic Compatibility: EN 61000
Recommended Users	50-500	Package Content	MAX HD2 MBX, PSU (ACW-630), 4x Dual Band Wi-Fi Antennas (ACW-341), 1x GPS Antenna (ACW-232), 8x 2dBi 4G LTE Antennas (ACW-813), 1 Pair of Mounting Brackets (ACW-513), 1x SIM Cover
Antenna Connectors	8x SMA Cellular Antenna Connectors 1x SMA GPS Antenna Connector 4x RP-SMA Wi-Fi Antenna Connectors		
Power Input	DC Jack/Terminal Block: 12-56 V#		

Ordering information

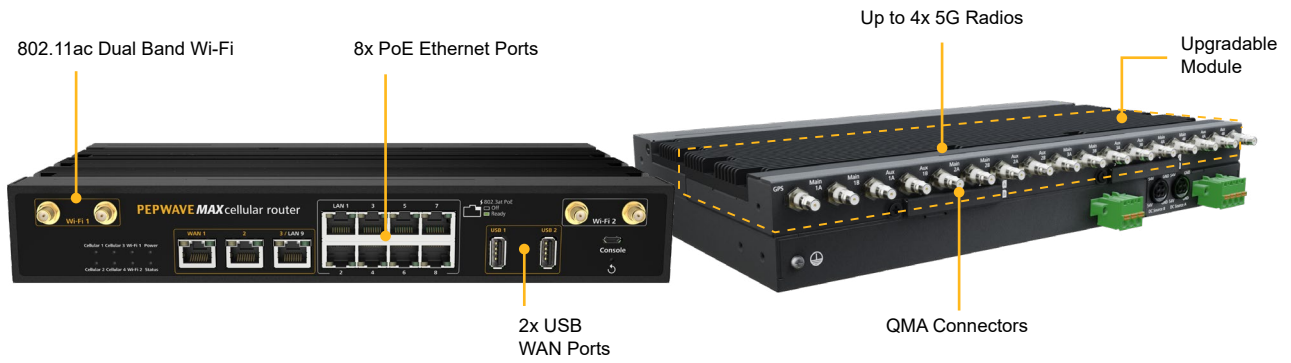
Product Code	Description	Embedded Modems	Carrier/Categories	5G Bands	LTE Bands
MAX-HD2-MBX-5GD-T	HD2 MBX 5G with 2x 5G modems	2	Global/5G	5G (NSA) Sub 6Ghz: n1, n2, n3, n5, n7, n8, n12, n20, n28, n38, n41, n66, n71, n77, n78, n79	B1, B2, B3, B4, B5, B7, B8, B12, B13, B14, B17, B18, B19, B20, B25, B26, B28, B29, B30, B32, B34, B38, B39, B40, B41, B42, B46, B48, B66, B71

Add-On Feature & Accessories

Product Code	Description
ACW-630	Includes 1x 54V, 3.34A Power Supply Enable 4x LAN with 802.3at PoE output (PoE License automatically applied after kit purchase)
ACW-633	Includes 2x 54V, 3.34A Power Supply Enables 8x LAN with 802.3at PoE output (PoE License automatically applied after kit purchase)
MAX-HD-020-SPF	Supports up to 20 PepVPN/SpeedFusion Peers
SFN-LC-50	Up to 50 SpeedFusion Bonding License Key for MAX HD2 MBX 5G
SIM-BK8-4E-56V	SIM Injector, 8x SIM cards capacity, 4x 10/100/1000 LAN ports, 56V DC

*WAN 3 is configured as a LAN port by default, configuration is changeable on the Web Admin.
#2x 54V DC input is needed for all 8x LAN ports to have 802.3at PoE. Plugging in 1x 54V DC input will result in 4x LAN ports having 802.3at PoE.
@Theoretical maximum data rates.
Available globally. Regional and carrier certification is subject to local approval.

HD4 MBX 5G[®]



Specifications

WAN Interface	4x Embedded Cellular Modems with Redundant SIM Slots 3x GE* 2x USB 2.0 Interface	Power Output	Up to Eight 802.3at PoE Outputs [#]
LAN Interface	9x GE*	Power Consumption	55 W (max.)
Wi-Fi Interface	802.11ac/a/b/g/n, 1166 Mbps 2x2MIMO Wi-Fi WAN and/or AP Simultaneous Dual-Band	Dimensions	1.7 x 11.5 x 7.0 inches 43 x 292 x 177 mm
Router Throughput	2.5 Gbps	Weight	7.28 pounds 3.3 kg
PepVPN Throughput (No Encryption)	600 Mbps	Operating Temperature	-40°– 149°F -40°– 65°C
PepVPN Throughput (256-bit AES)	500 Mbps	Humidity	15%–95% (non-condensing)
5G Cellular Data Rate[@] (Downlink/Uplink)	5G: 4 Gbps / 700 Mbps LTE CAT-20: 2 Gbps / 150 Mbps	Certifications	FCC, CE, RoHS, E-Mark, PTCRB, Shock and Vibration Resistance: EN 61373:1999 IEC 61373:1999 Railway Applications: EN 50155 Electromagnetic Compatibility: EN 61000
Recommended Users	50-500	Package Content	MAX HD4 MBX, PSU (ACW-630), 1x GPS Antenna (ACW-232), 1x QMA to SMA Adaptor, 4x Dual Band Wi-Fi Antennas (ACW-341), 1 Pair of Mounting Brackets (ACW-513), 2x SIM Cover * Cellular antennas not included. To enhance the MBX, Puma antennas are recommended.
Antenna Connectors	16x QMA Antenna Connectors 1x QMA GPS Antenna Connector 4x RP-SMA Wi-Fi Antenna Connectors		
Power Input	DC Jack/Terminal Block: 12-56 V [#]		

Ordering information

Product Code	Description	Embedded Modems	Carrier/Categories	5G Bands	LTE Bands
MAX-HD4-MBX-5GD-T	HD4 MBX 5G with 4x 5G modems	4	Global/5G	5G (NSA) Sub 6Ghz: n1, n2, n3, n5, n7, n8, n12, n20, n28, n38, n41, n66, n71, n77, n78, n79	B1, B2, B3, B4, B5, B7, B8, B12, B13, B14, B17, B18, B19, B20, B25, B26, B28, B29, B30, B32, B34, B38, B39, B40, B41, B42, B46, B48, B66, B71

Add-On Feature & Accessories

Product Code	Description
ACW-630	Includes 1x 54V, 3.34A Power Supply Enable 4x LAN with 802.3at PoE output (PoE License automatically applied after kit purchase)
ACW-633	Includes 2x 54V, 3.34A Power Supply Enables 8x LAN with 802.3at PoE output (PoE License automatically applied after kit purchase)
MAX-HD-020-SPF	Supports up to 20 PepVPN/SpeedFusion Peers
SFN-LC-50	Up to 50 SpeedFusion Bonding License Key for MAX HD4 MBX 5G
SIM-BK8-4E-56V	SIM Injector, 8x SIM cards capacity, 4x 10/100/1000 LAN ports, 56V DC

*WAN 3 is configured as a LAN port by default, configuration is changeable on the Web Admin.

[#]2x 54V DC input is needed for all 8x LAN ports to have 802.3at PoE. Plugging in 1x 54V DC input will result in 4x LAN ports having 802.3at PoE.

[@]Theoretical maximum data rates

Available globally. Regional and carrier certification is subject to local approval.

Expansion Module for HD2 MBX



Specifications

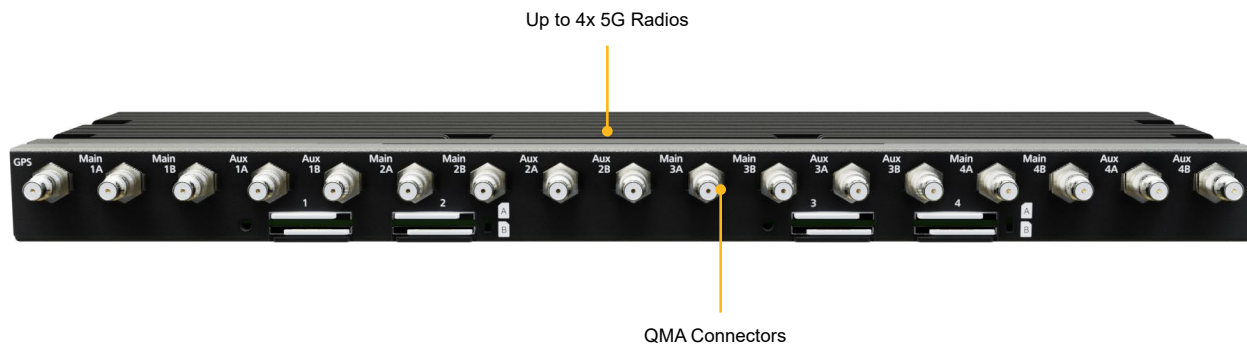
Interface	2x Embedded Cellular Modems with Redundant SIM Slots	Dimensions	0.9 x 11.5 x 3.5 inches 22 x 292 x 88 mm
Antenna Connectors	8x SMA Antenna Connectors, 1x SMA GPS Antenna Connector	Weight	2.2 pounds 1 kg
5G Cellular Data Rate® (Downlink/Uplink)	5G: 4 Gbps / 700 Mbps LTE CAT-20: 2 Gbps / 150 Mbps		

Ordering information

Product Code	Description	Embedded Modems	Carrier/Categories	5G Bands	LTE Bands
EXM-MBX-T2-5GD	Expansion Module for HD2 MBX 5G with 2x 5G modems	2	Global/ 5G	5G (NSA) Sub 6Ghz: n1, n2, n3, n5, n7, n8, n12, n20, n28, n38, n41, n66, n71, n77, n78, n79	B1, B2, B3, B4, B5, B7, B8, B12, B13, B14, B17, B18, B19, B20, B25, B26, B28, B29, B30, B32, B34, B38, B39, B40, B41, B42, B46, B48, B66, B71

®Theoretical maximum data rates
Available globally. Regional and carrier certification is subject to local approval.

Expansion Module for HD4 MBX



Specifications

Interface	4x Embedded Cellular Modems with Redundant SIM Slots	Dimensions	0.9 x 11.5 x 3.5 inches 22 x 292 x 88 mm
Antenna Connectors	16x QMA Antenna Connectors, 1x QMA GPS Antenna Connector	Weight	2.2 pounds 1 kg
5G Cellular Data Rate® (Downlink/Uplink)	5G: 4 Gbps / 700 Mbps LTE CAT-20: 2 Gbps / 150 Mbps		

Ordering information

Product Code	Description	Embedded Modems	Carrier/Categories	5G Bands	LTE Bands
EXM-MBX-T4-5GD	Expansion Module for HD4 MBX 5G with 4x 5G modems	4	Global/5G	5G (NSA) Sub 6Ghz: n1, n2, n3, n5, n7, n8, n12, n20, n28, n38, n41, n66, n71, n77, n78, n79	B1, B2, B3, B4, B5, B7, B8, B12, B13, B14, B17, B18, B19, B20, B25, B26, B28, B29, B30, B32, B34, B38, B39, B40, B41, B42, B46, B48, B66, B71

®Theoretical maximum data rates
Available globally. Regional and carrier certification is subject to local approval.